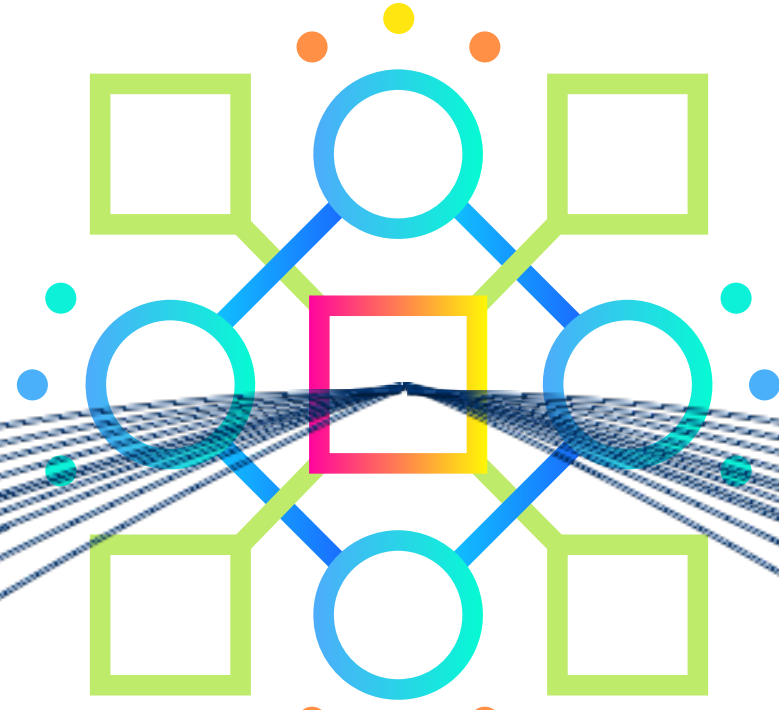
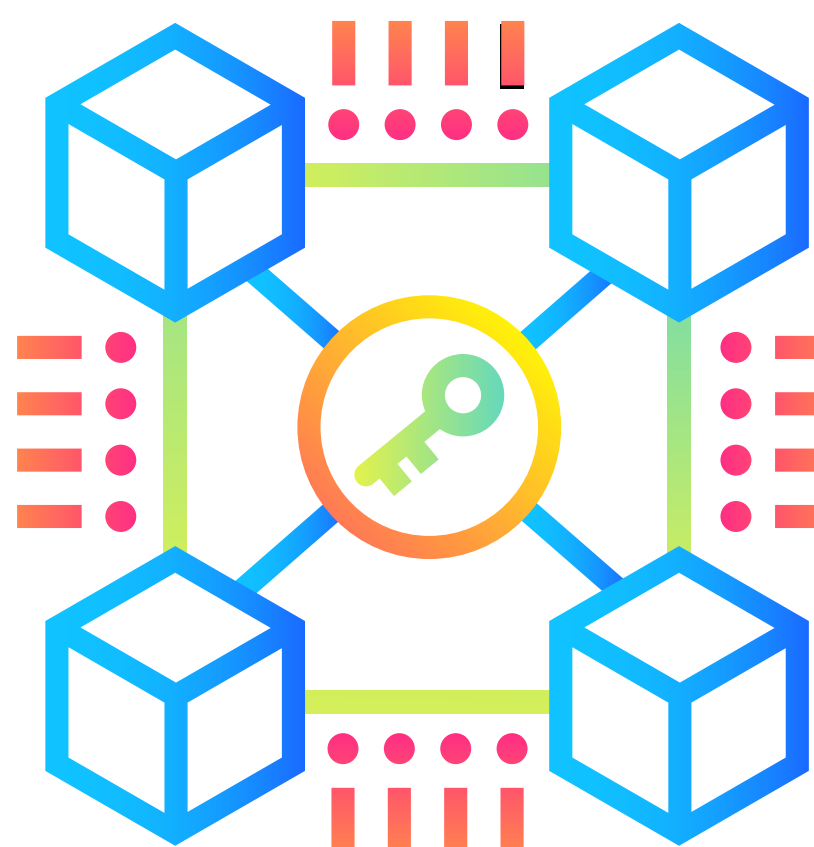


(1) websocket feed



(1) websocket load balancer
(C, Linux, TLS Offload, Jumbo Pipes)

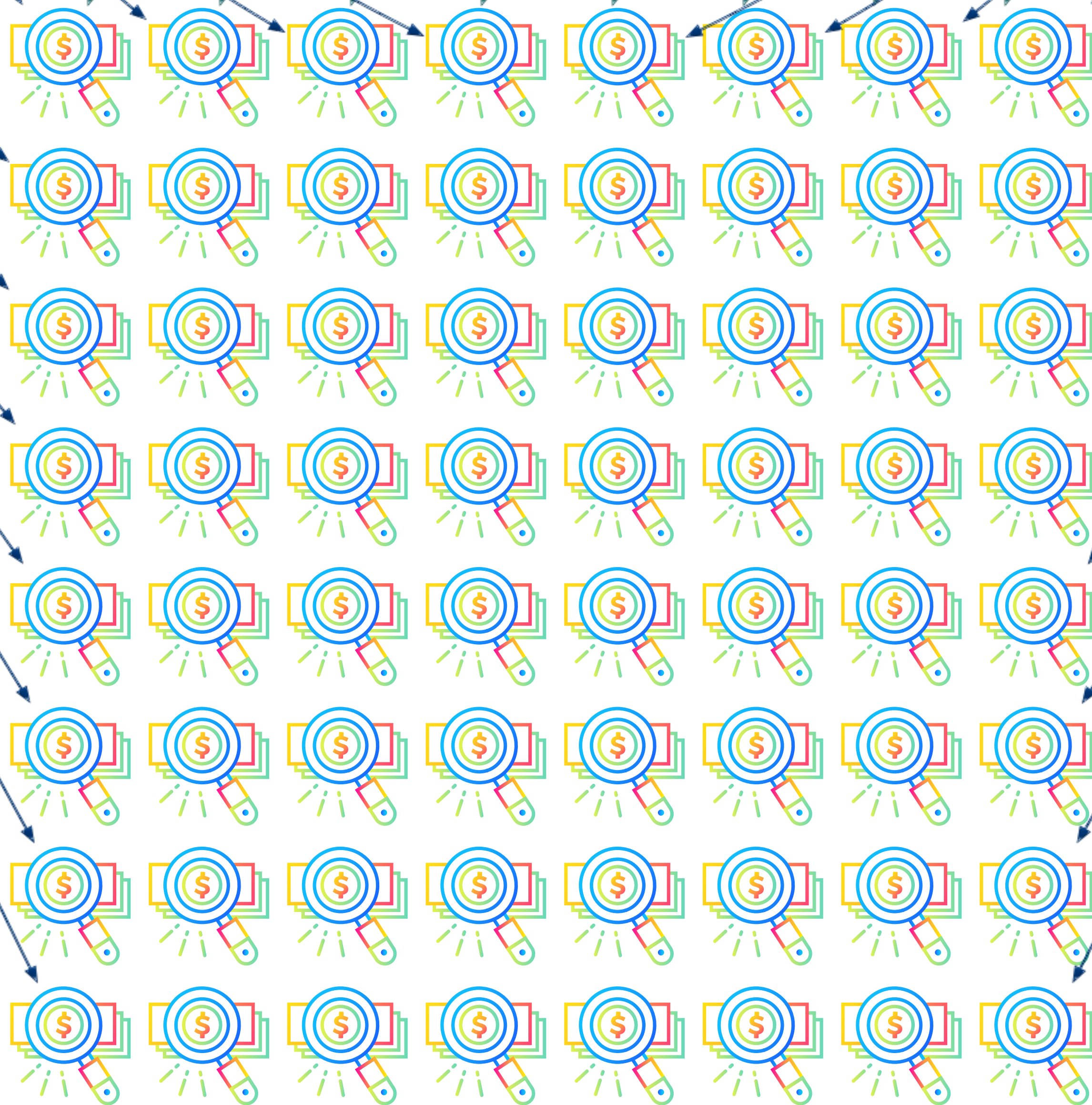
fork



(1) forked
worker manager
(Python)

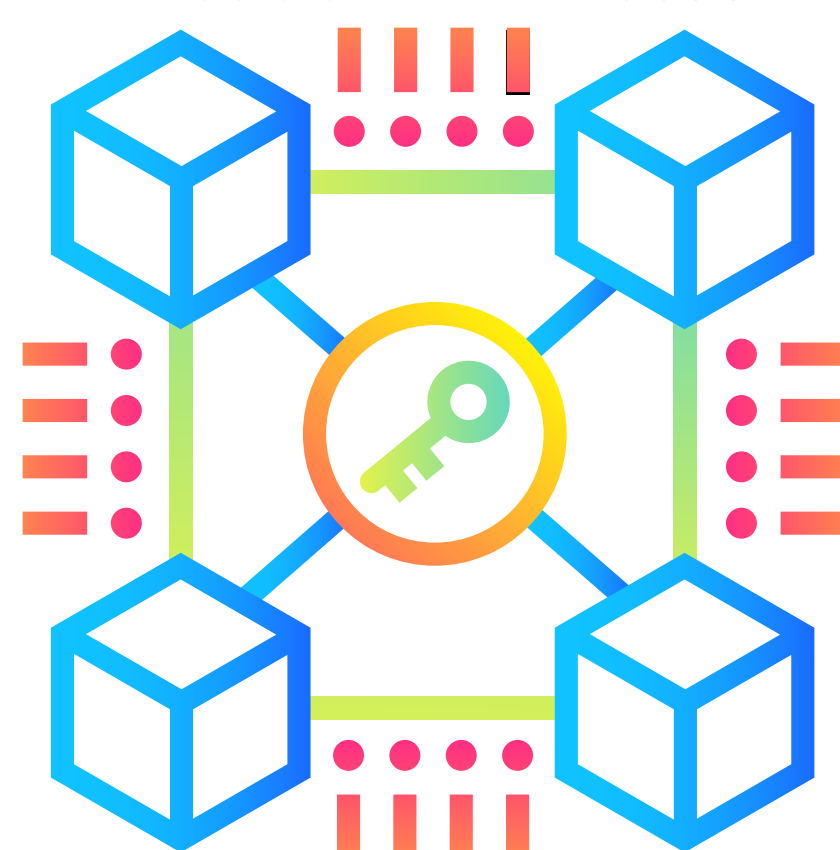
(N) pipes sending trades from
load balancer to workers

fork fork fork fork fork fork fork fork fork
fork fork fork fork fork fork fork fork fork
fork fork fork fork fork fork fork fork fork
fork fork fork fork fork fork fork fork fork



(N) concurrent pipe readers
(forked from primary manager,
which inherited the pipes to read
from websocket load balancer)

(N) individual worker
outbound reply pipes
for broadcasting completed
bars to clients



primary manager
worker process again
(same as above,
just copied for clarity)

outbound client
websocket pub/sub connections
for reading completed bars
in real time

