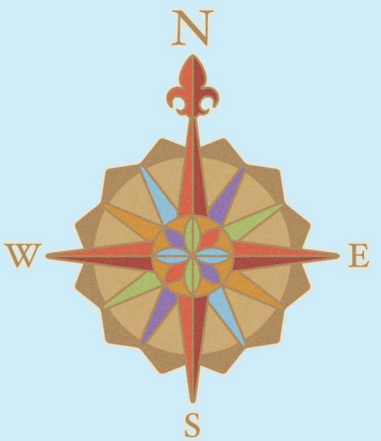


New York to Costa Rica to New York

Matt's 2013



New York City



BERMUDA

BAHAMAS

TURKS AND CAICOS ISLANDS

CAYMAN ISLANDS

ANGUILLA

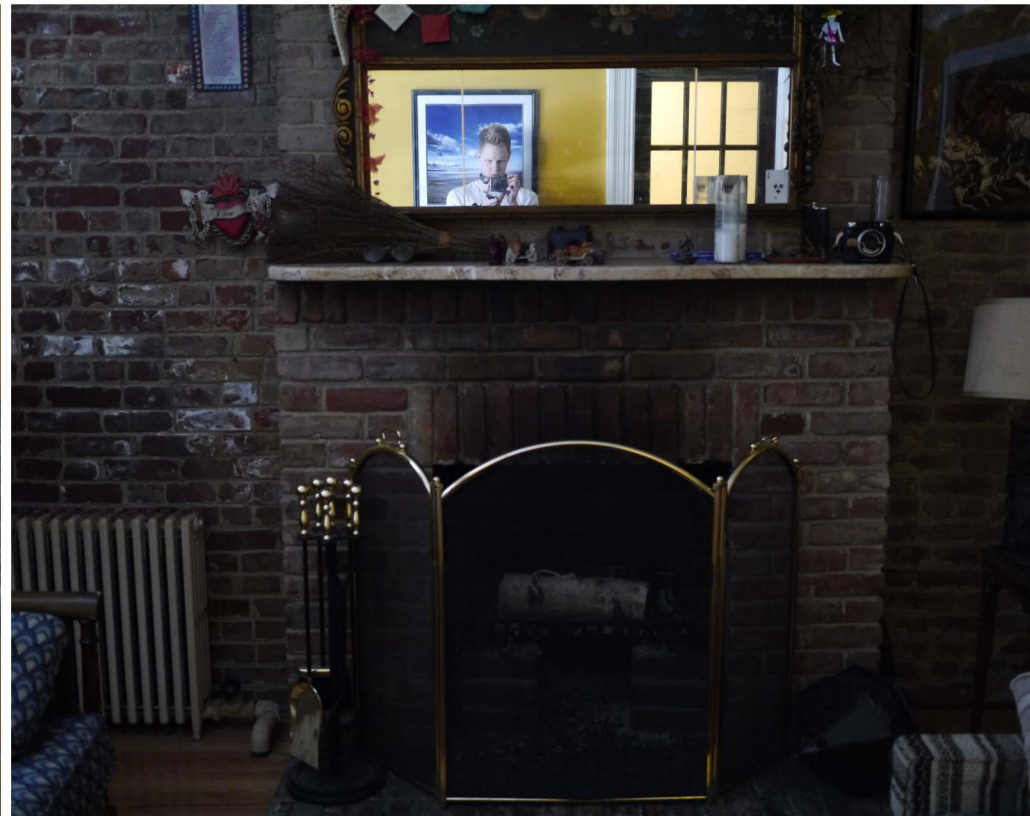
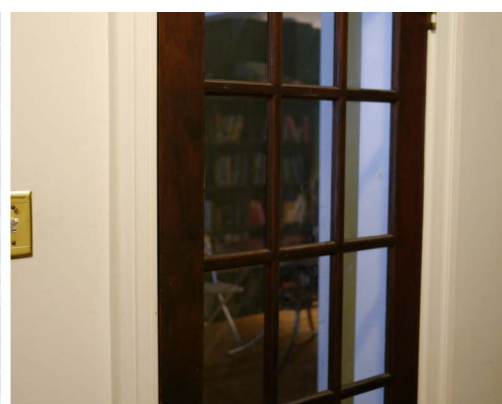
DOMINICA

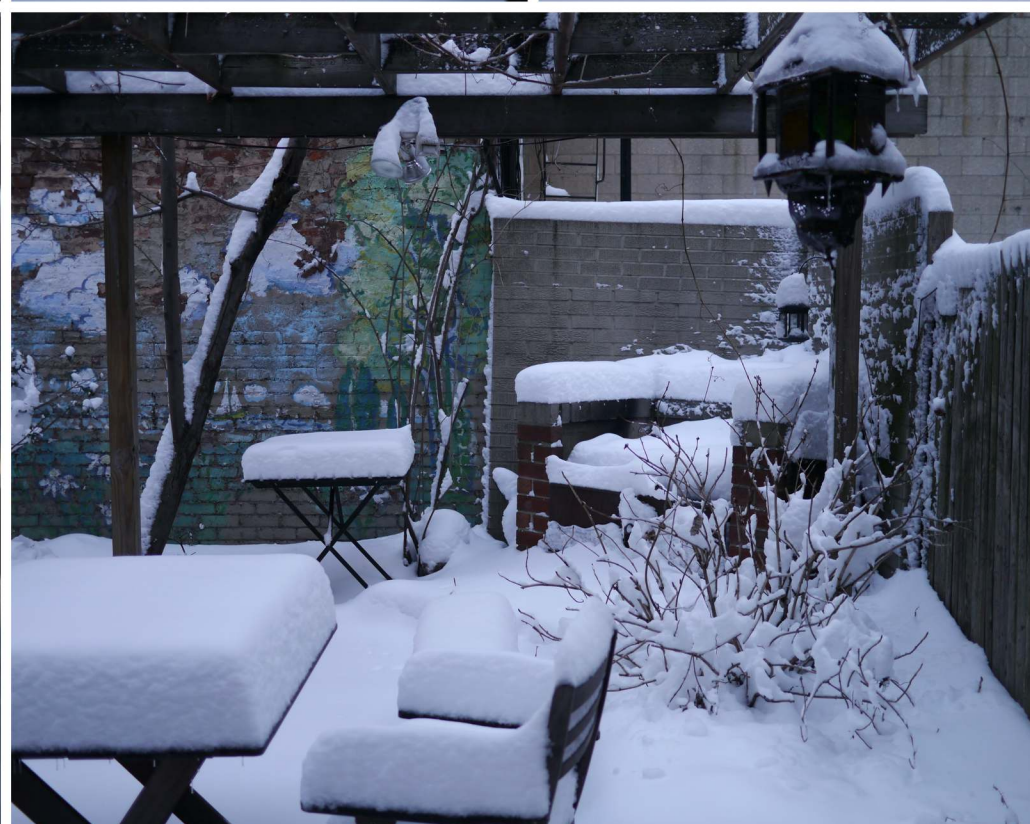
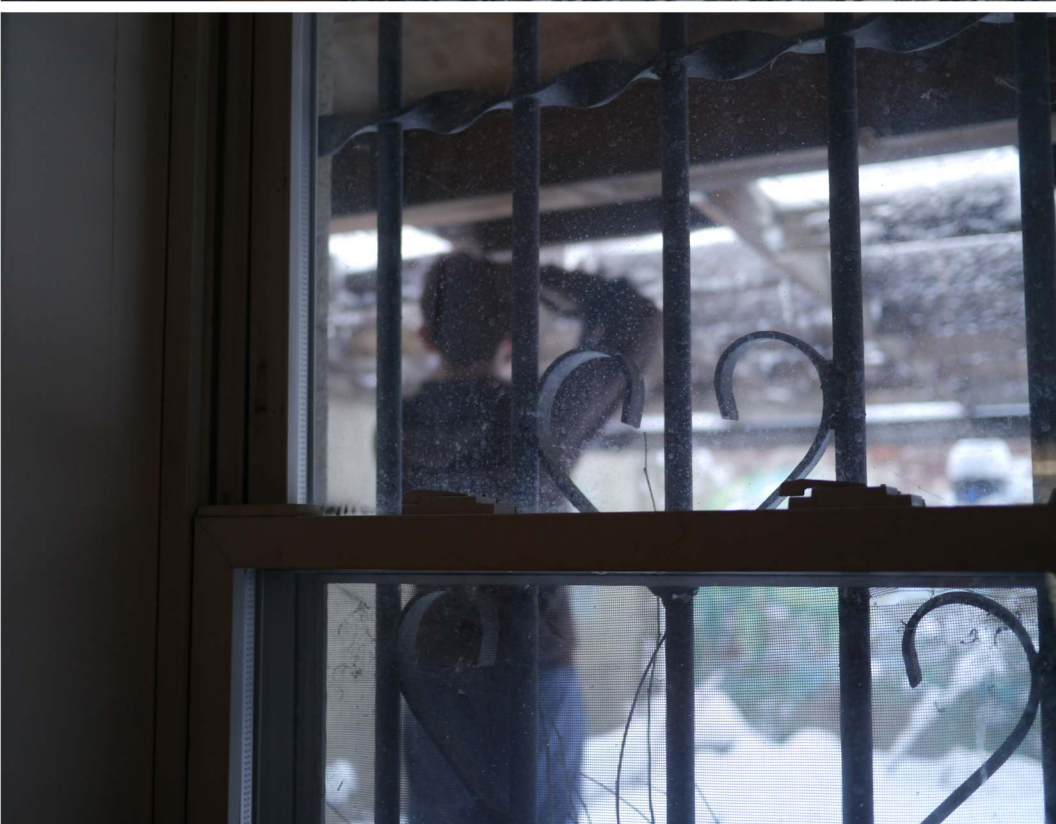
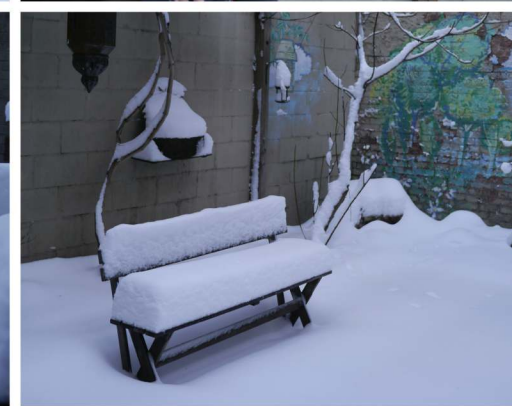
BARBADOS

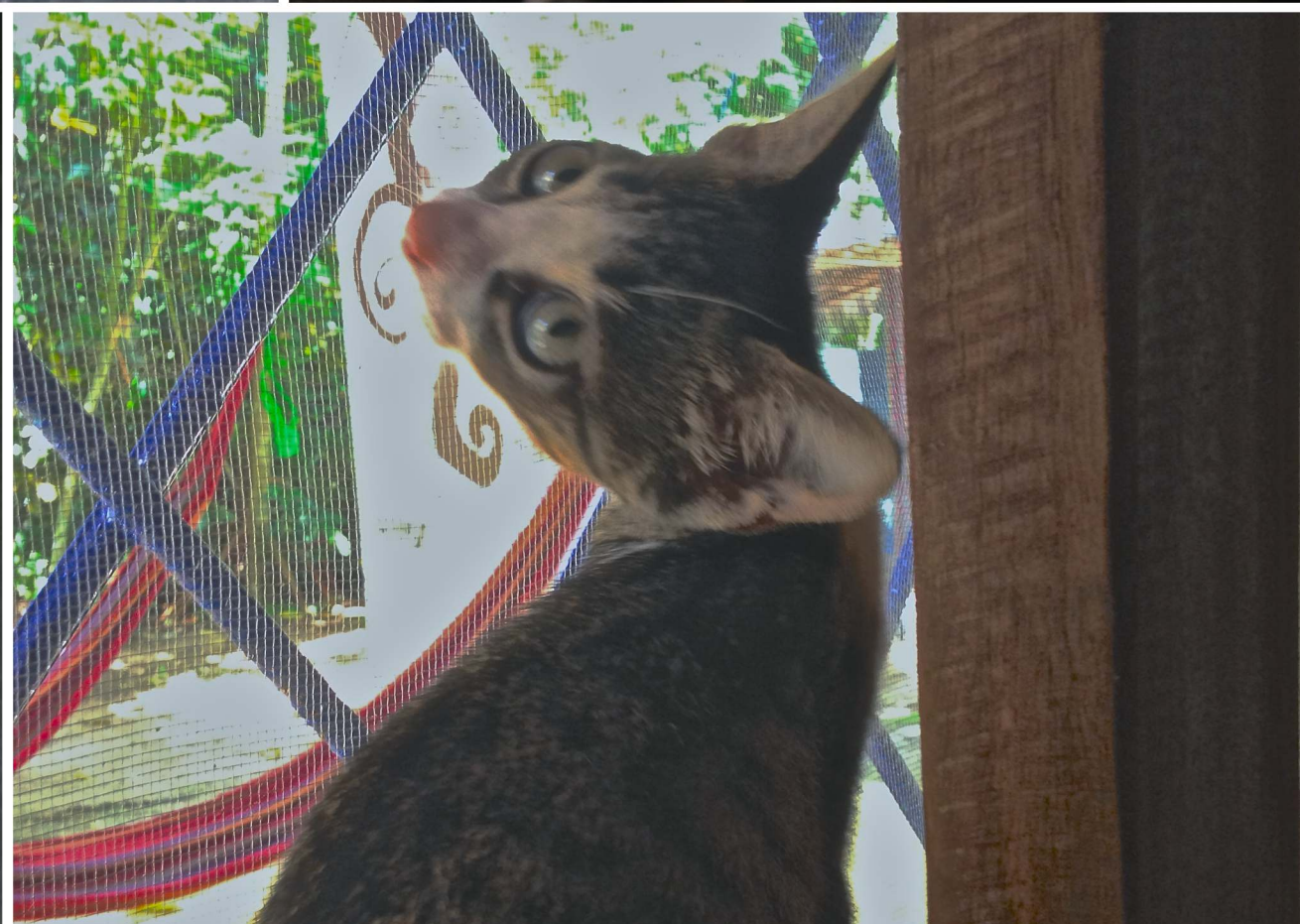
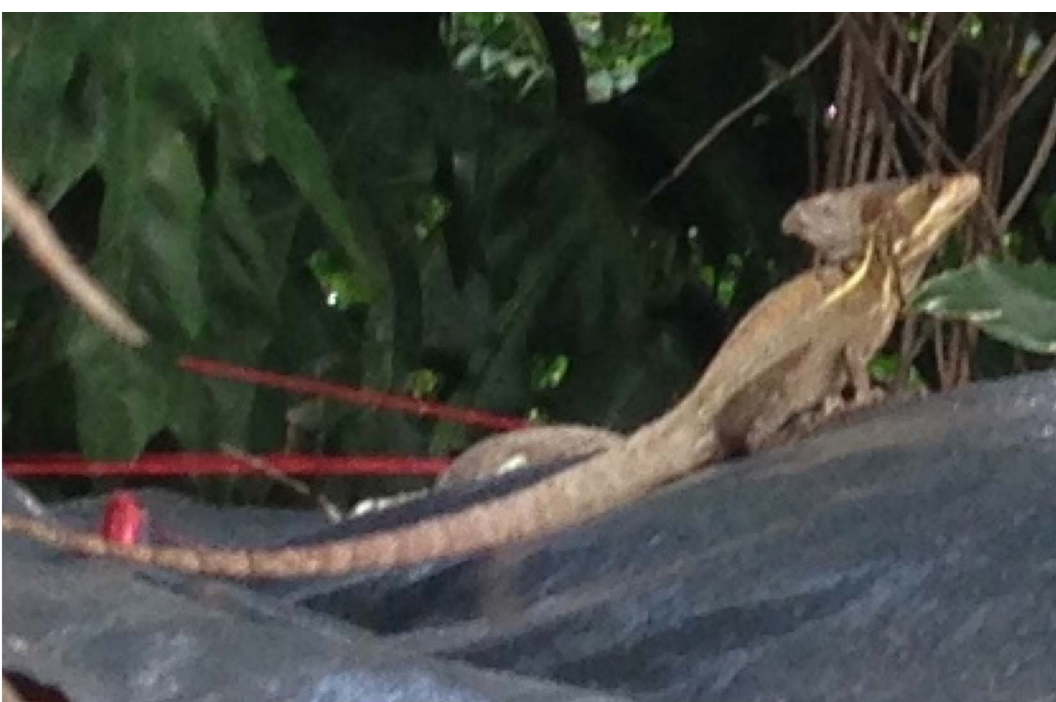
GRENADA

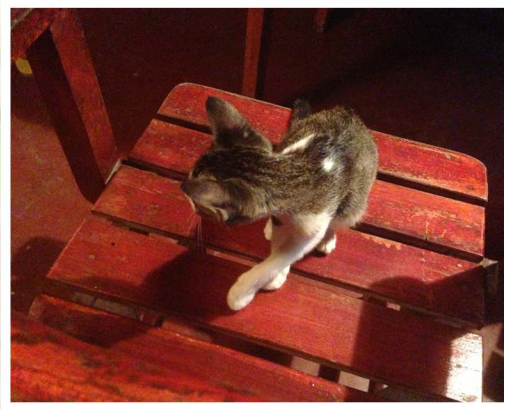
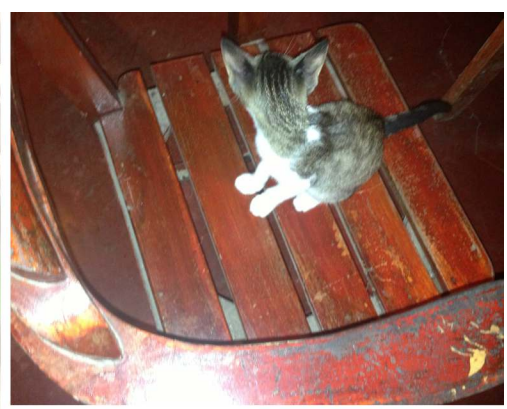
COSTA RICA

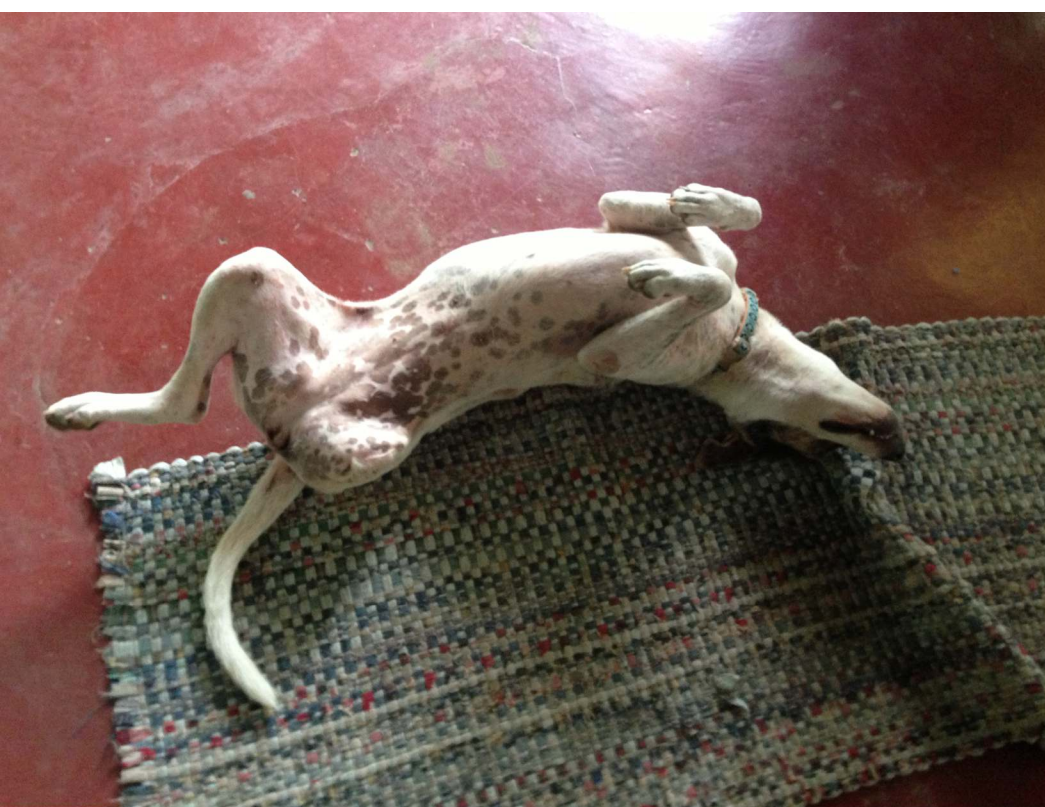
Puerto Viejo

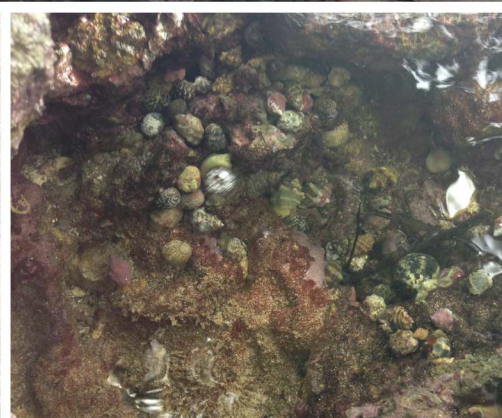
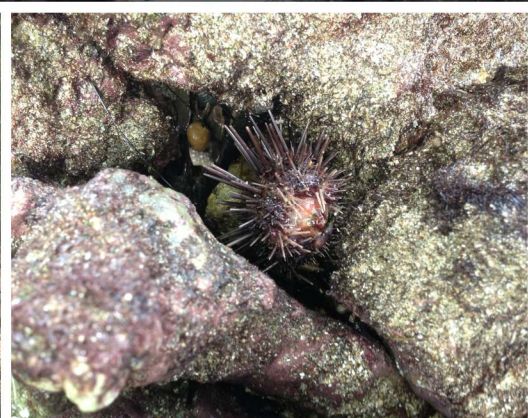
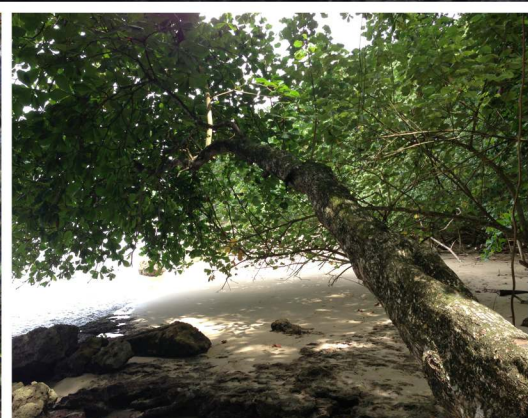






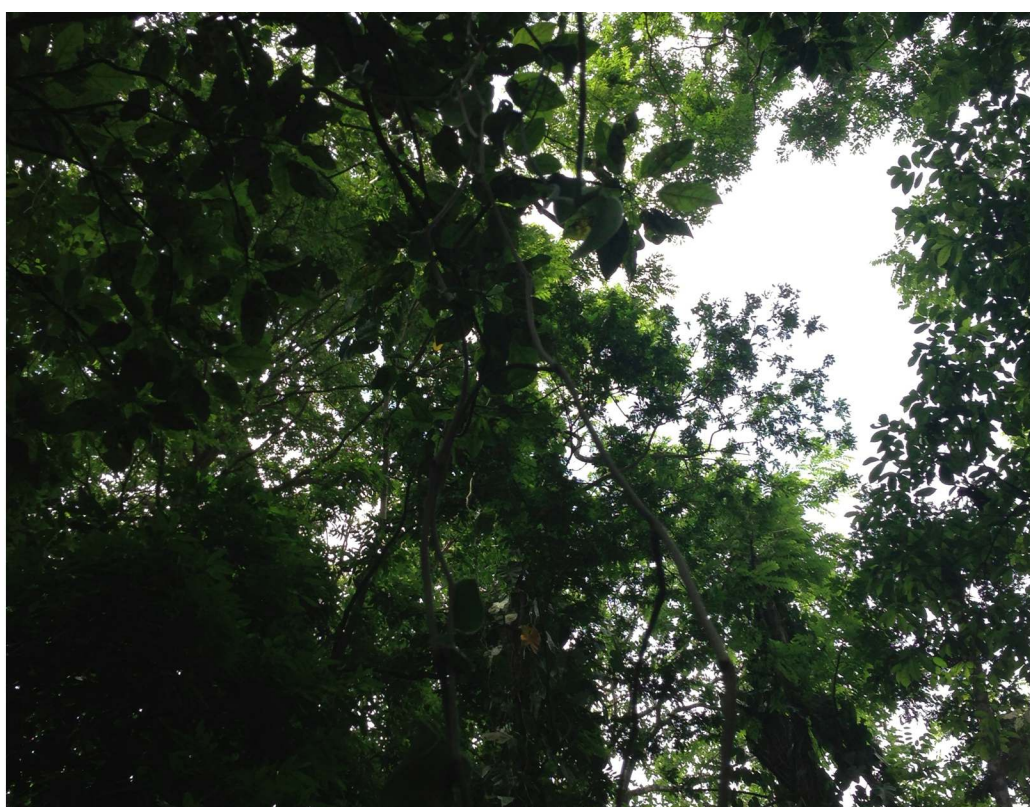
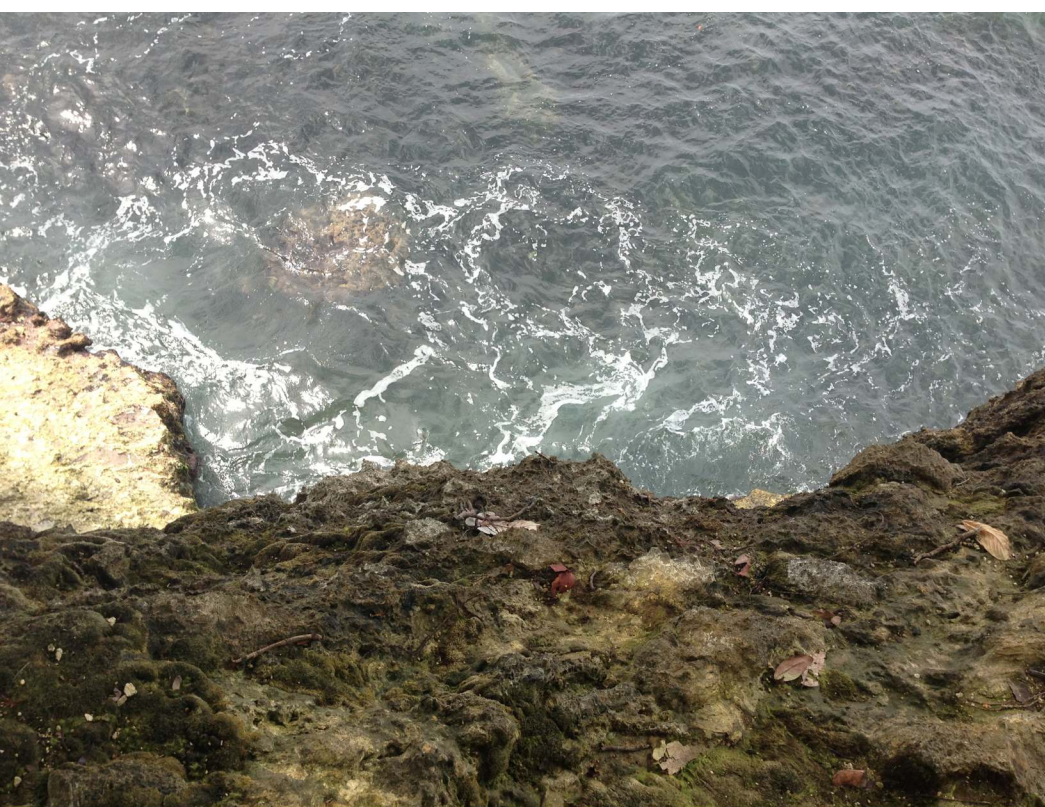


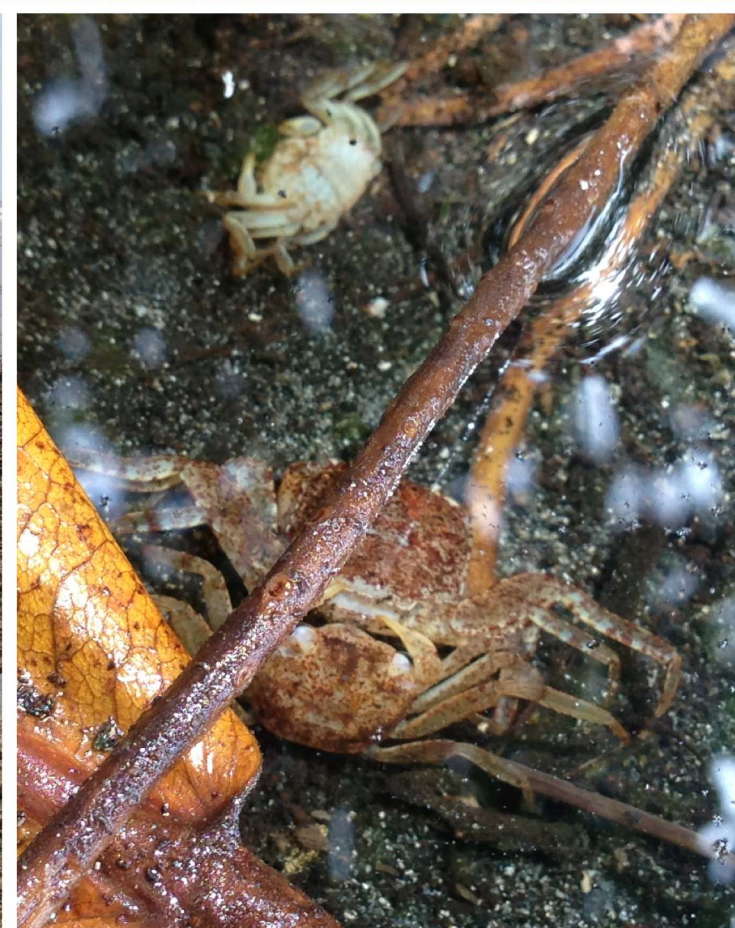


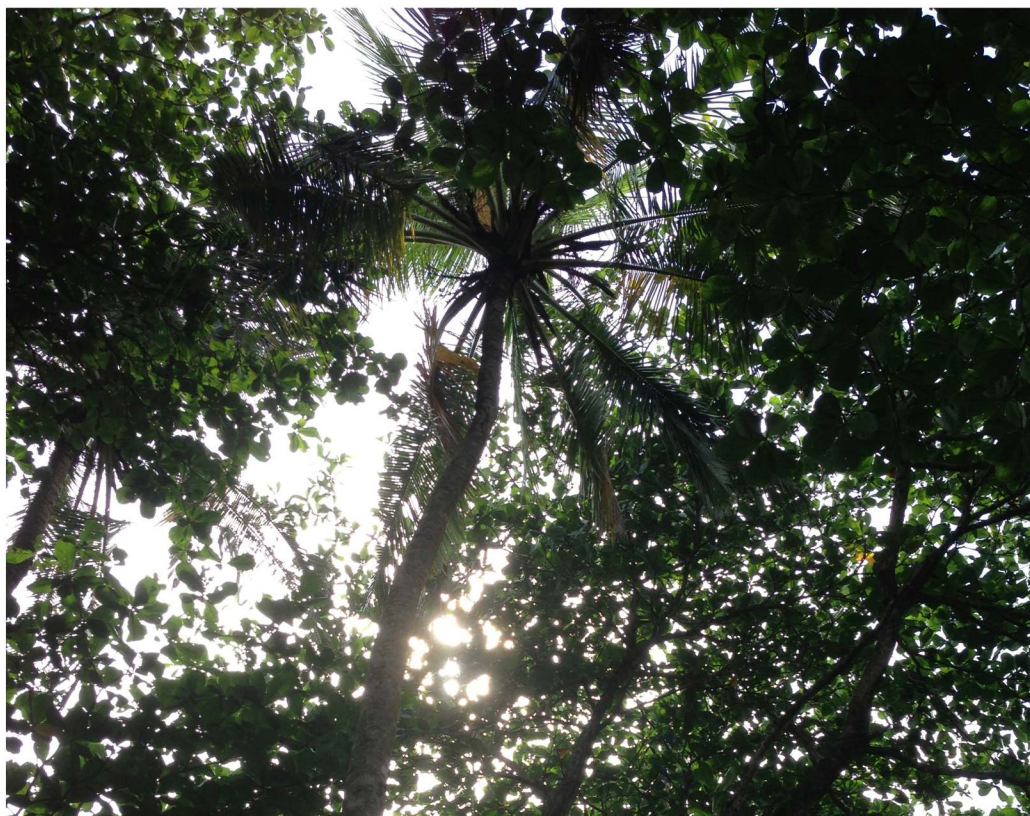






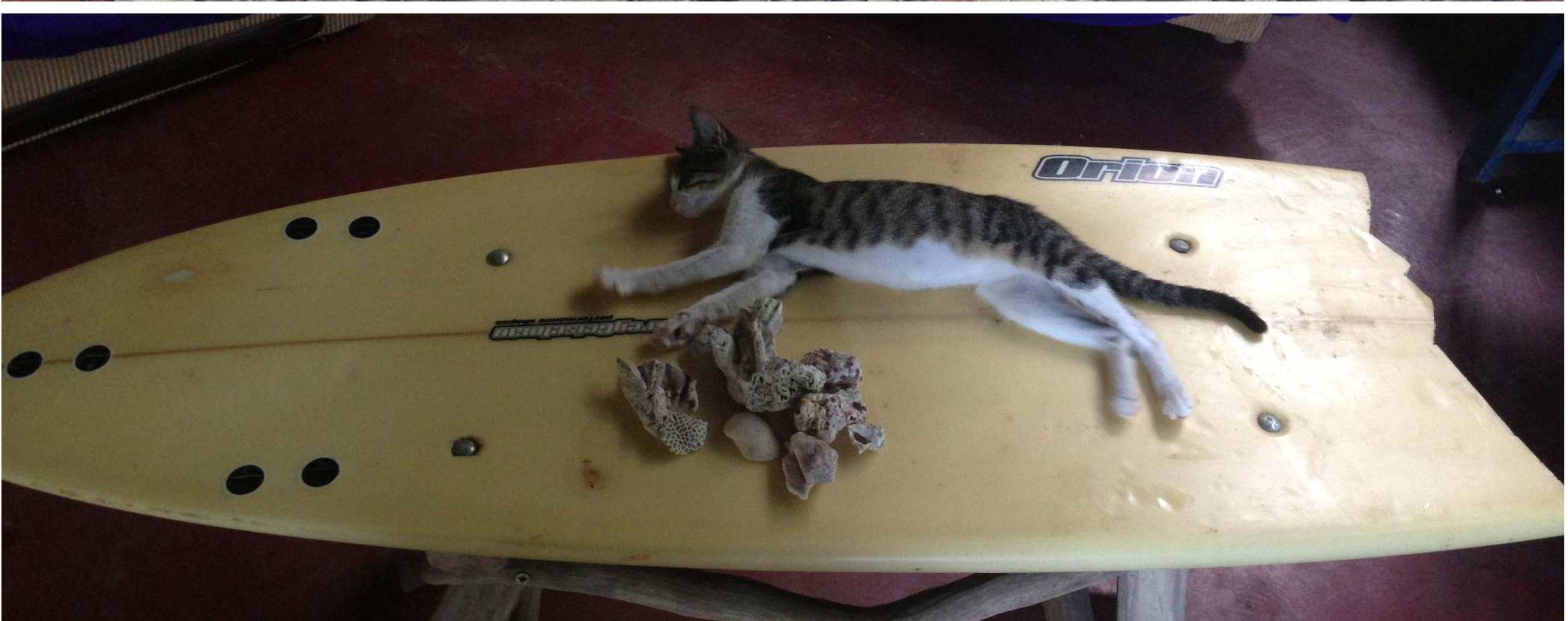














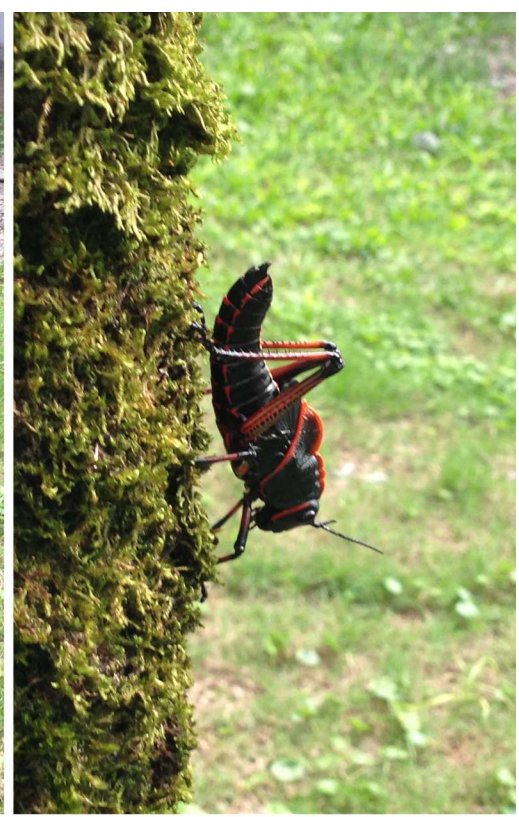
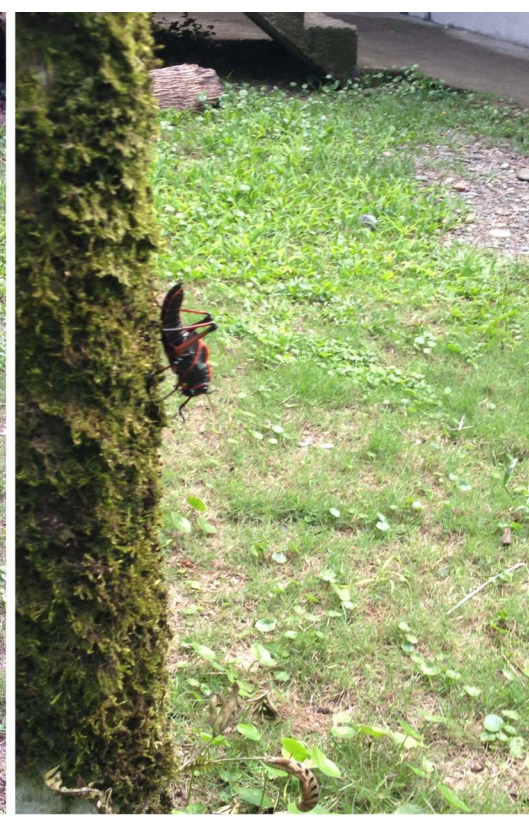
Kitchen Rules

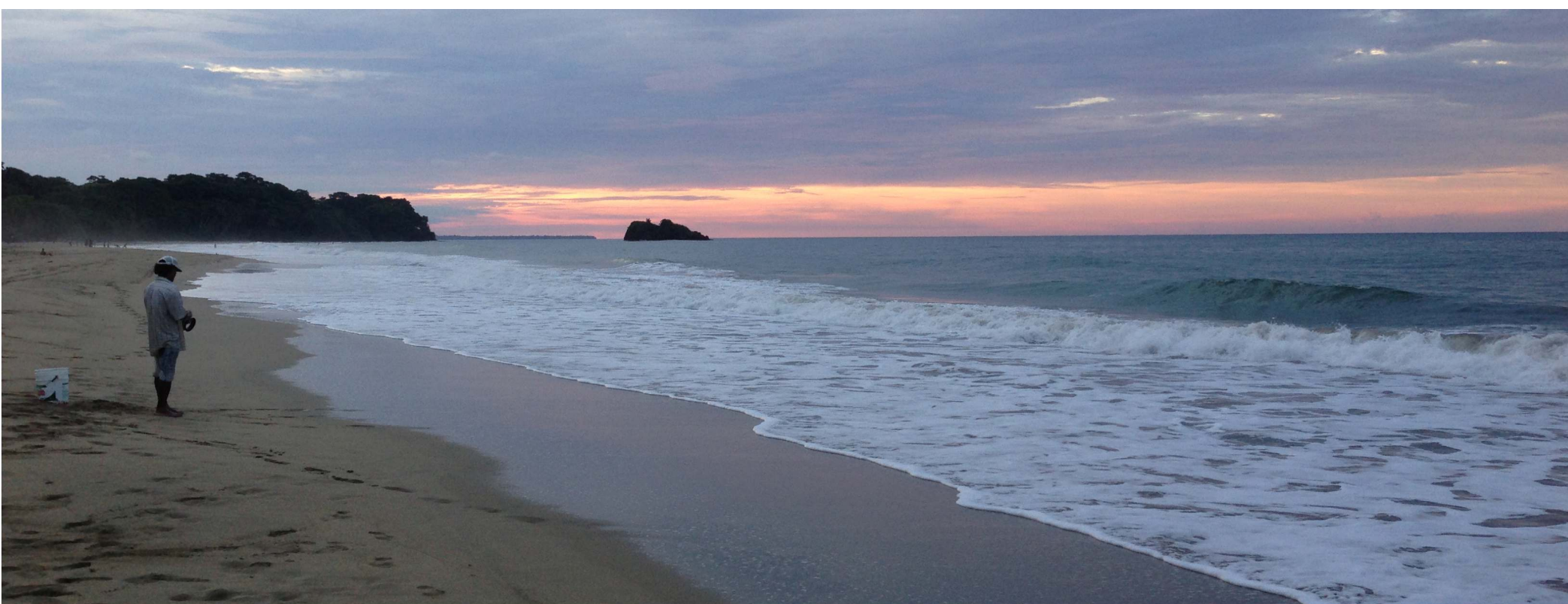
- Open at 8am
Close at 10PM
- Write your name & date on your food
- your mother doesn't live here **WASH YOUR DISHES**
- Do not put food in the sink!
- Compost is out back to the right, please use it 😊
- Thank you!

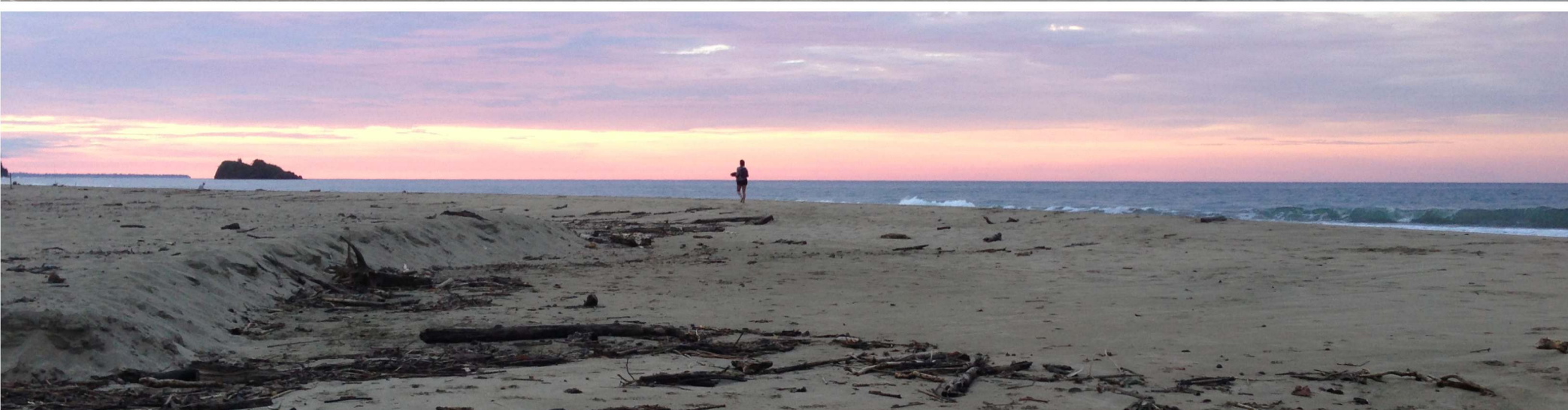
Reglas de La Cocina

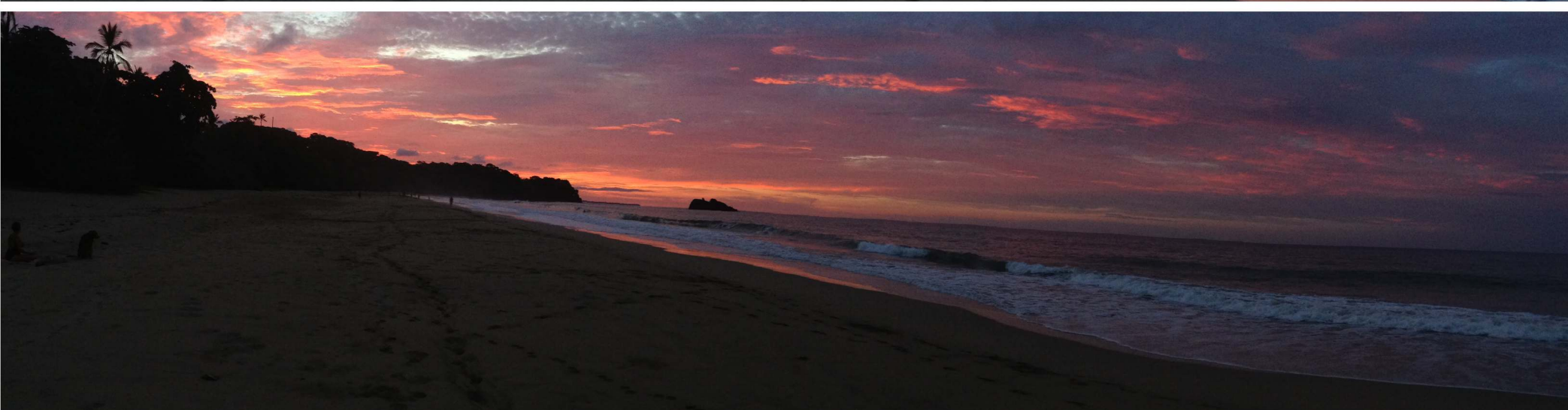
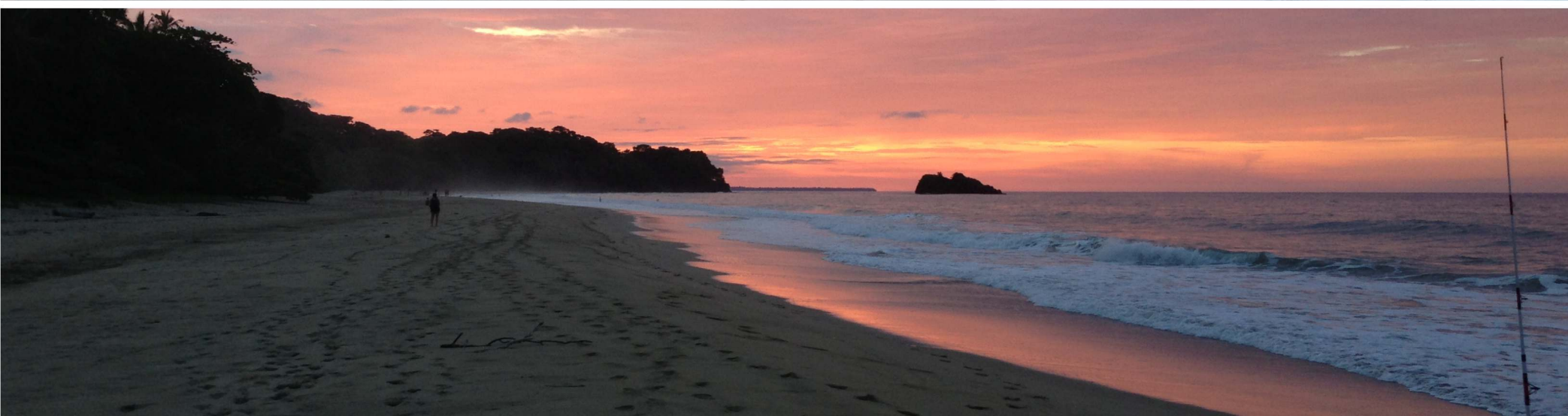
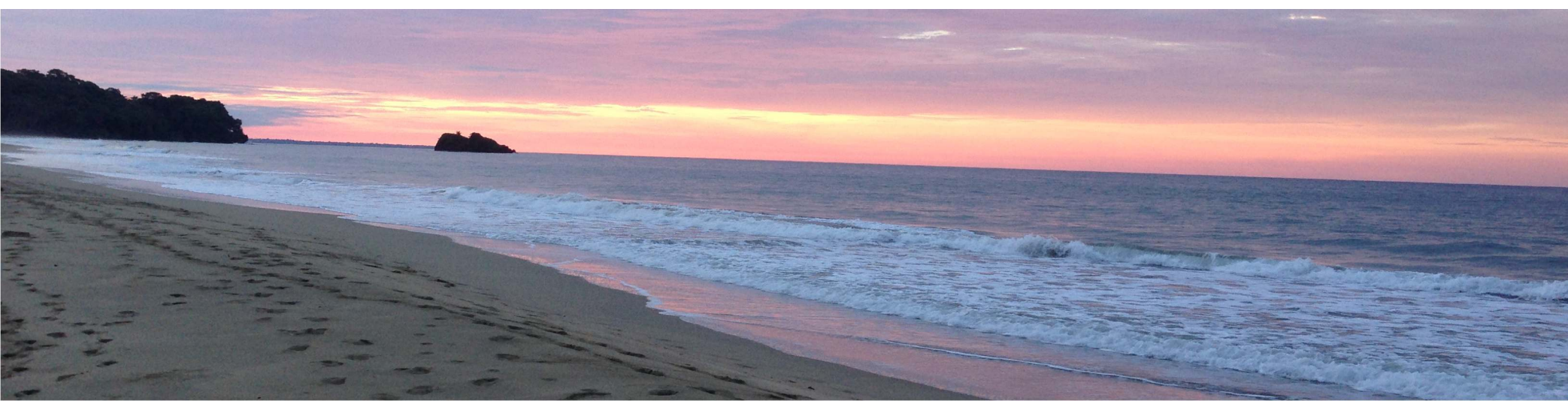
- Abierto a las 8am
Cerrado a las 10PM
- Escribe tu nombre y la Fecha en tu Comida
- Su mamá no viven aquí **¡LAVA TUS PLATOS**
- No poner la comida en la pila
- Los restos de comida orgánica poner los afuera a la derecha para usarlos 😊
- ¡Gracias!



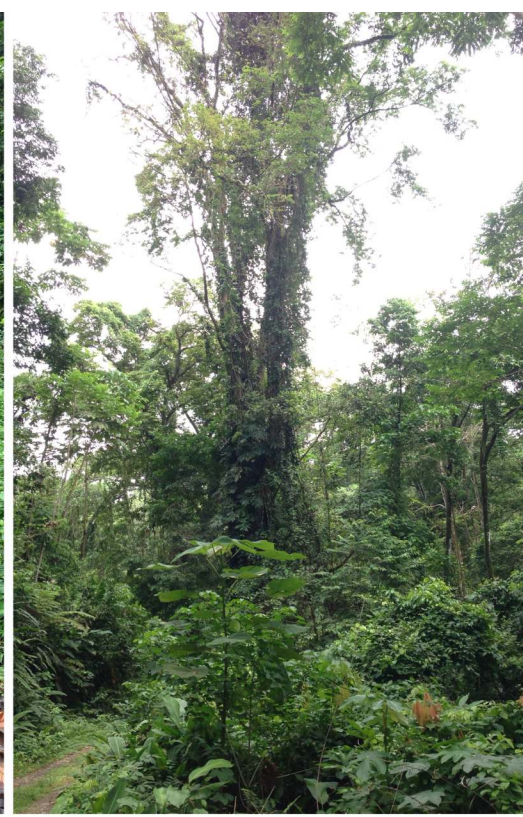


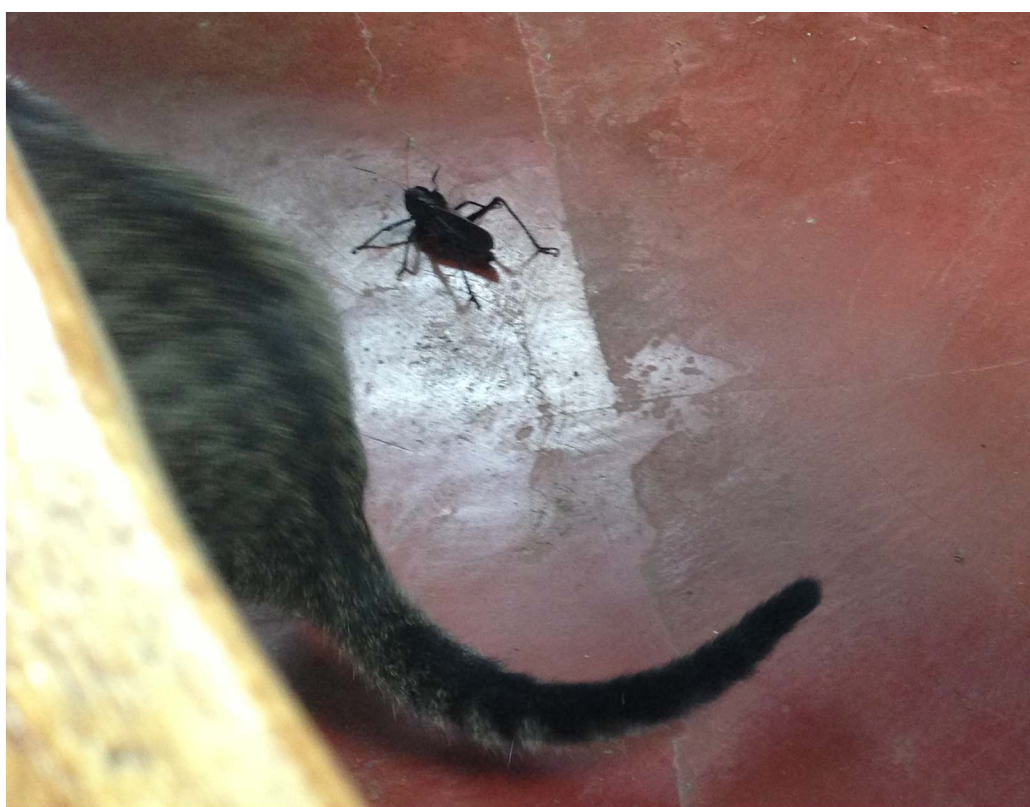


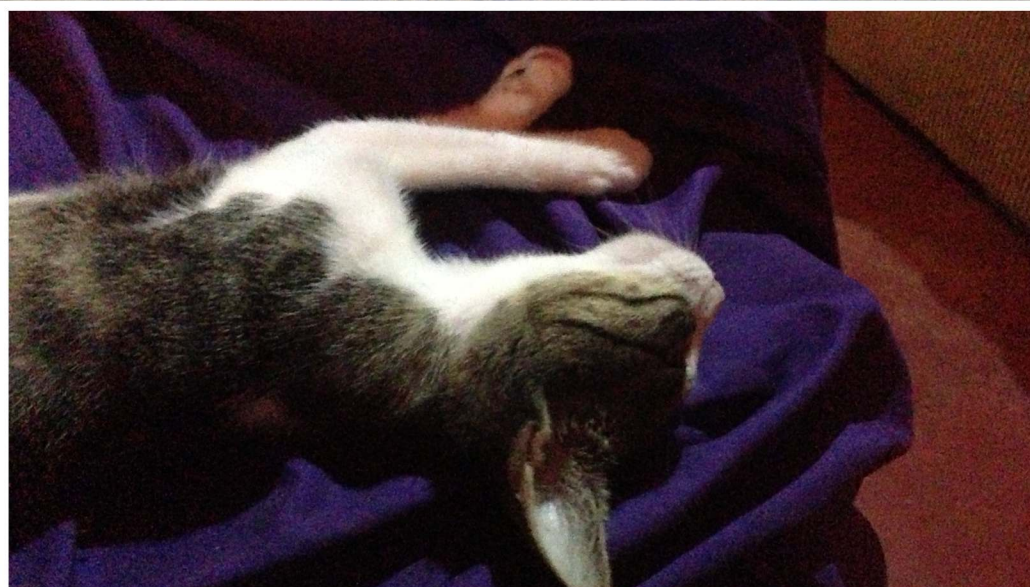
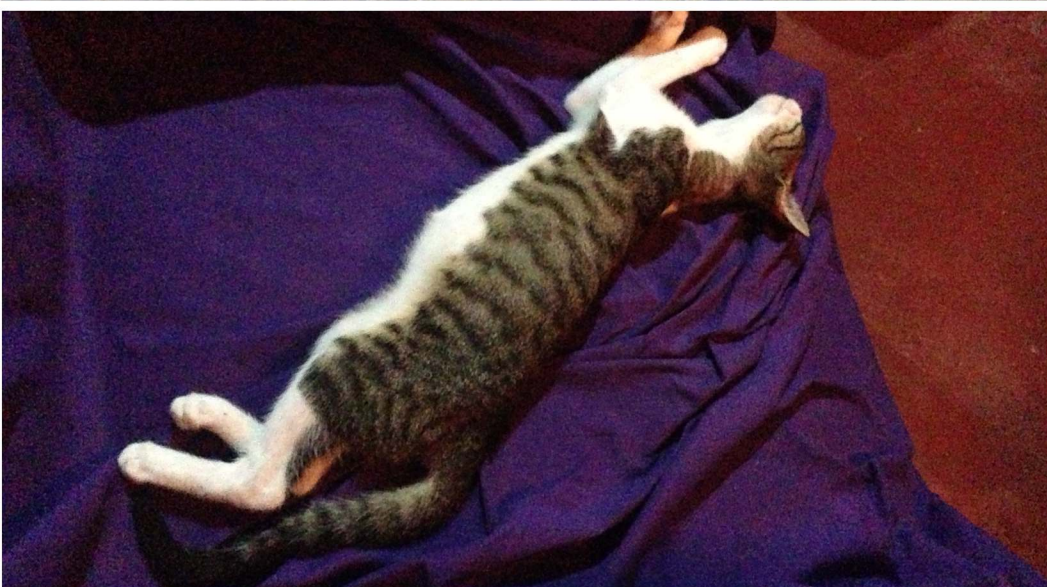


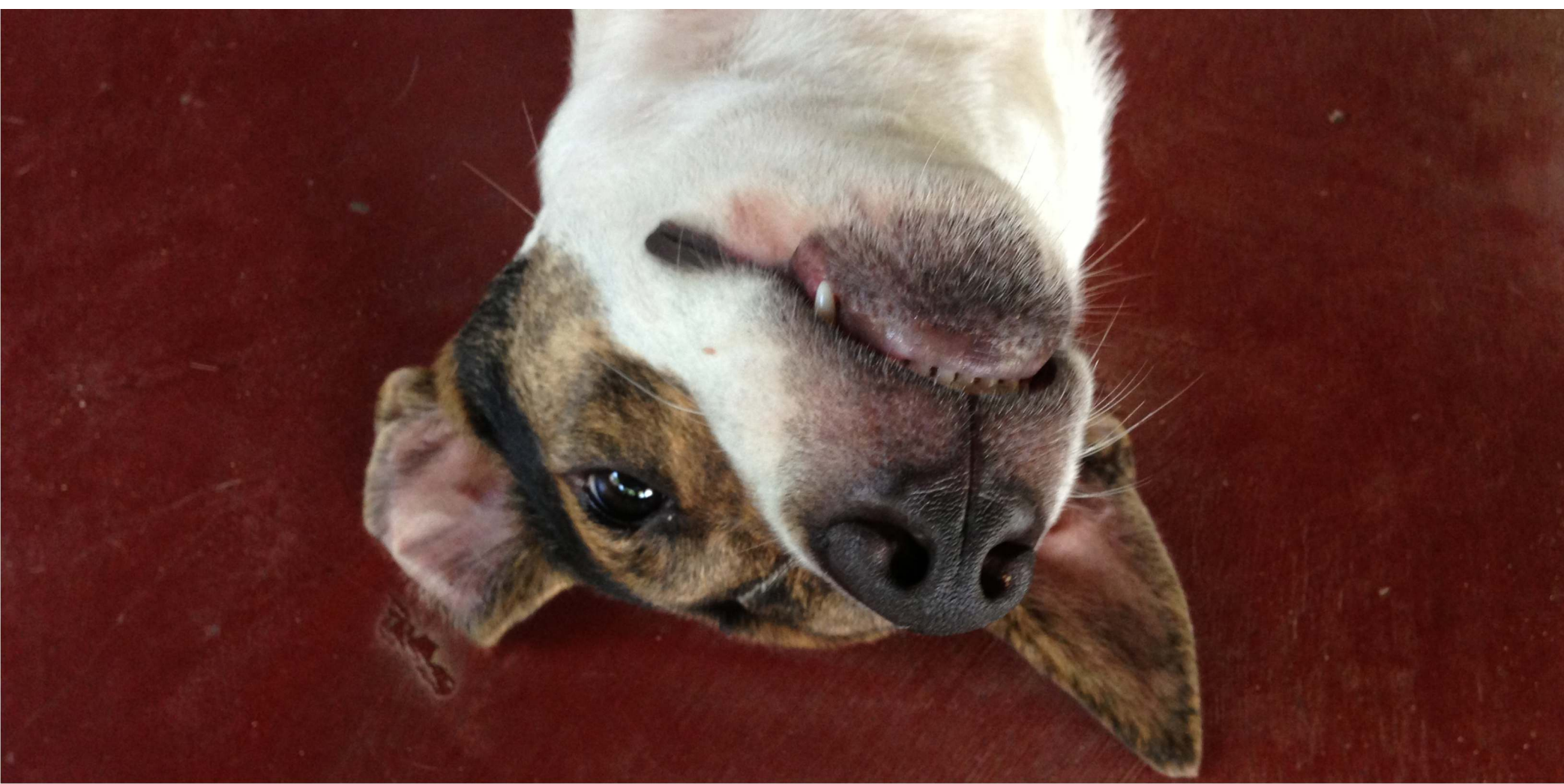


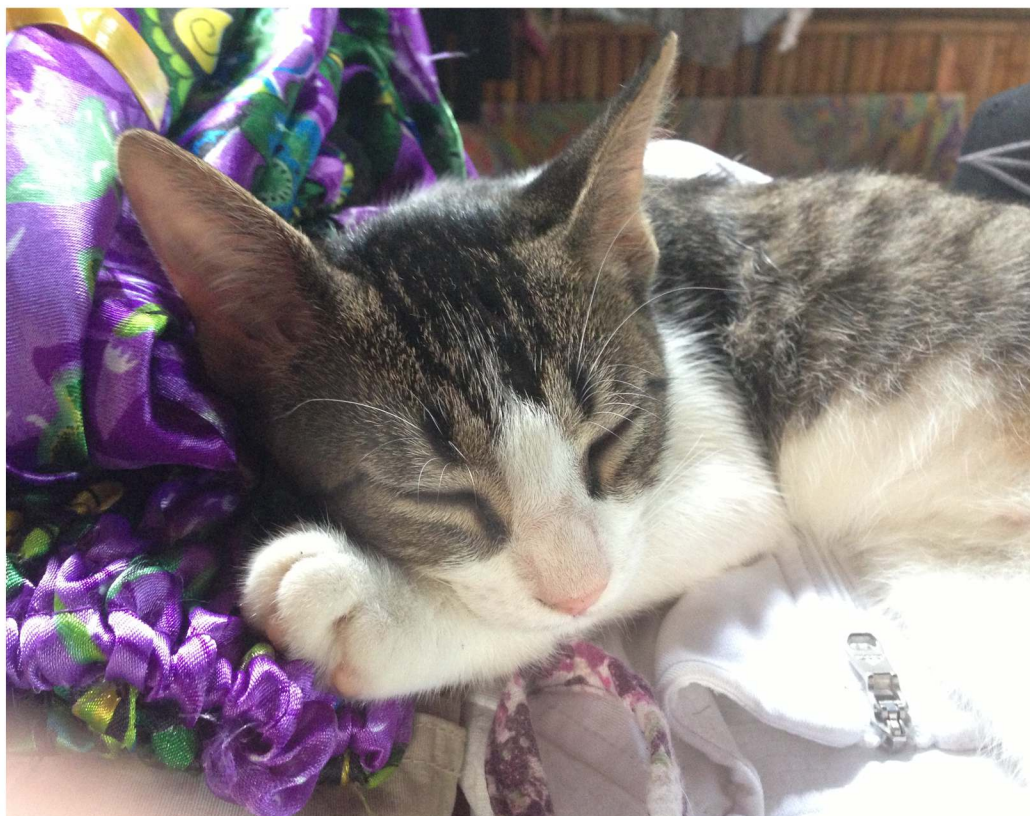
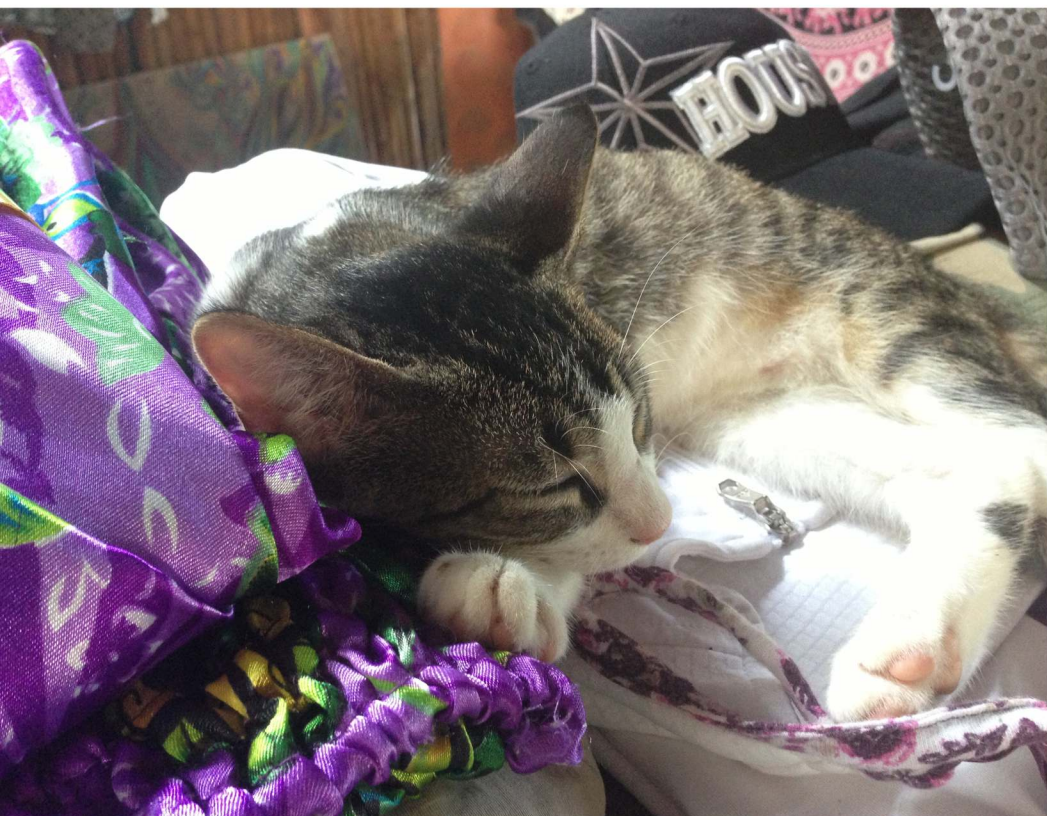
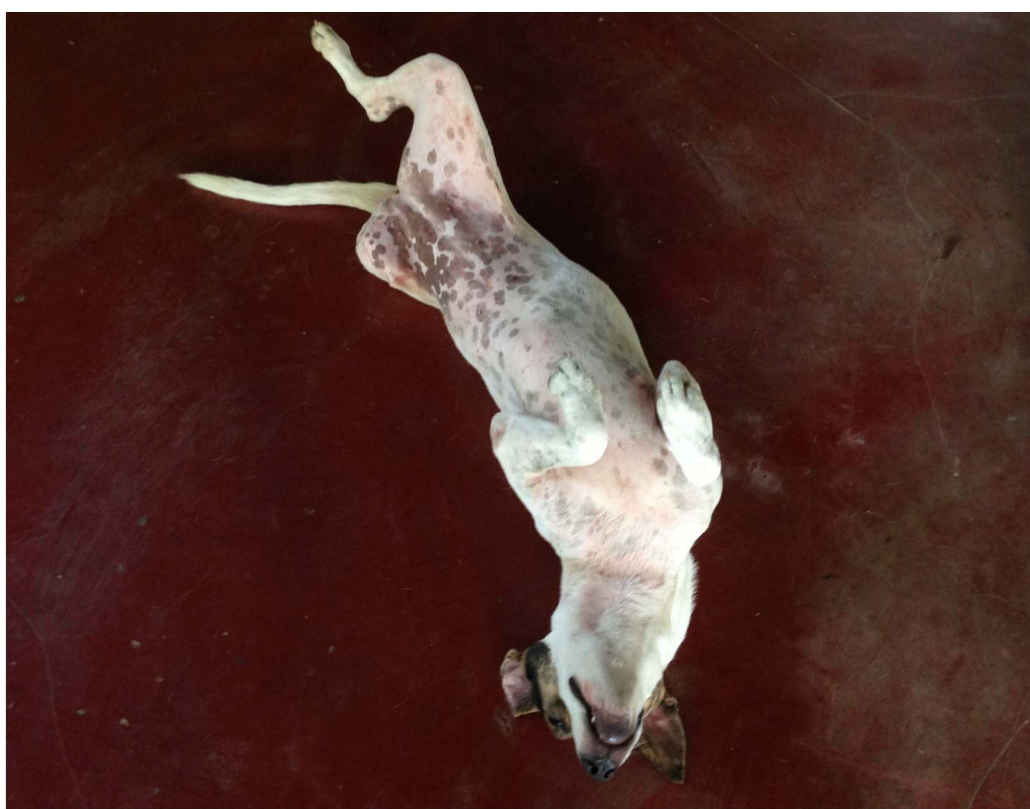
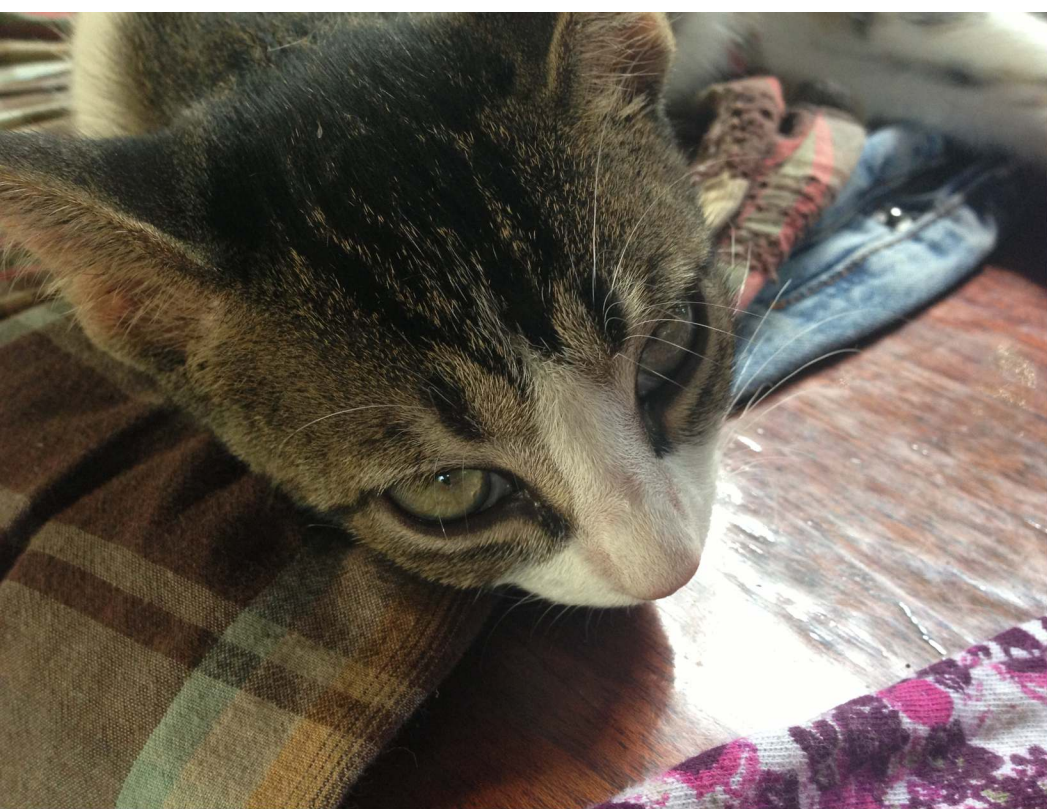


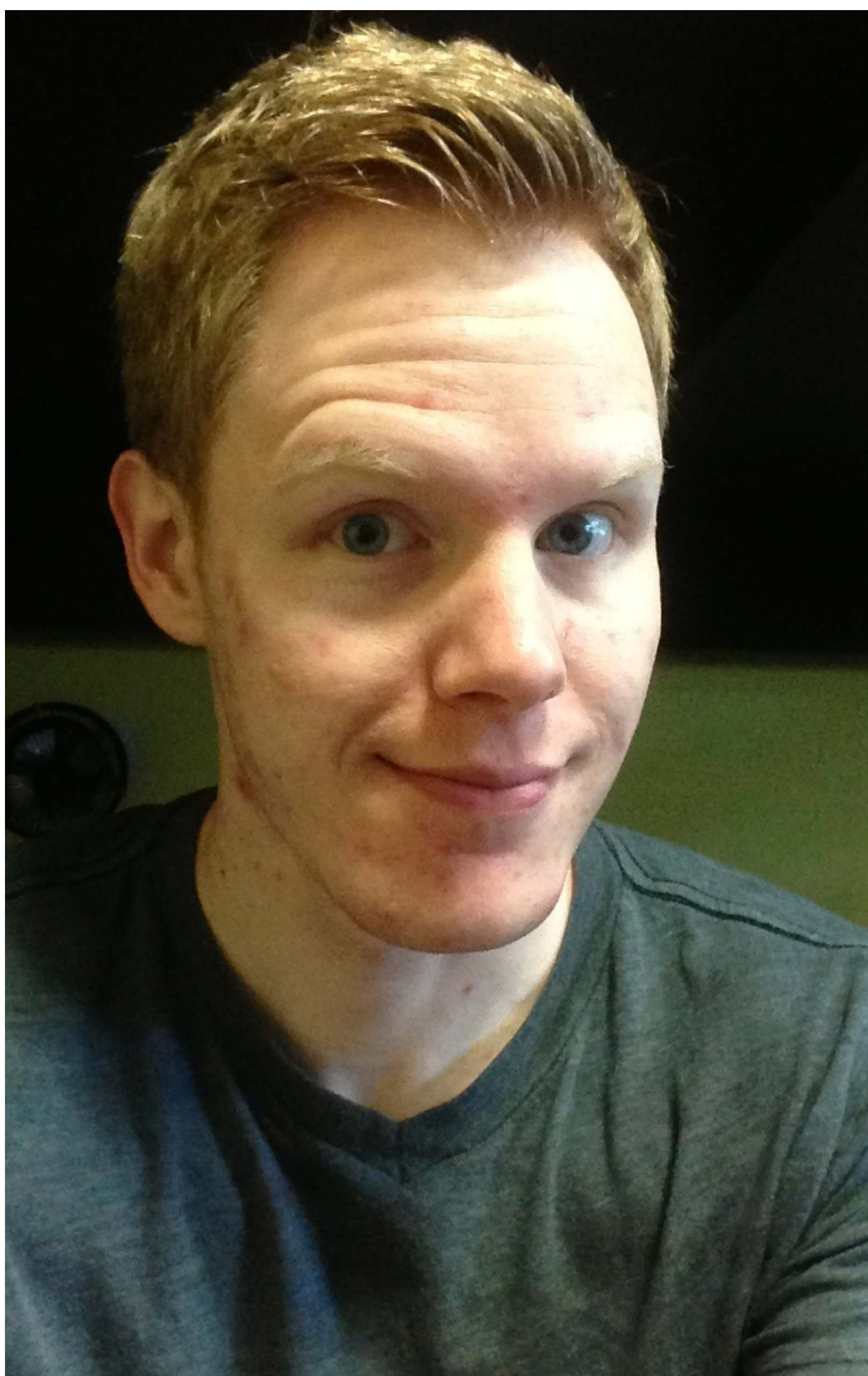
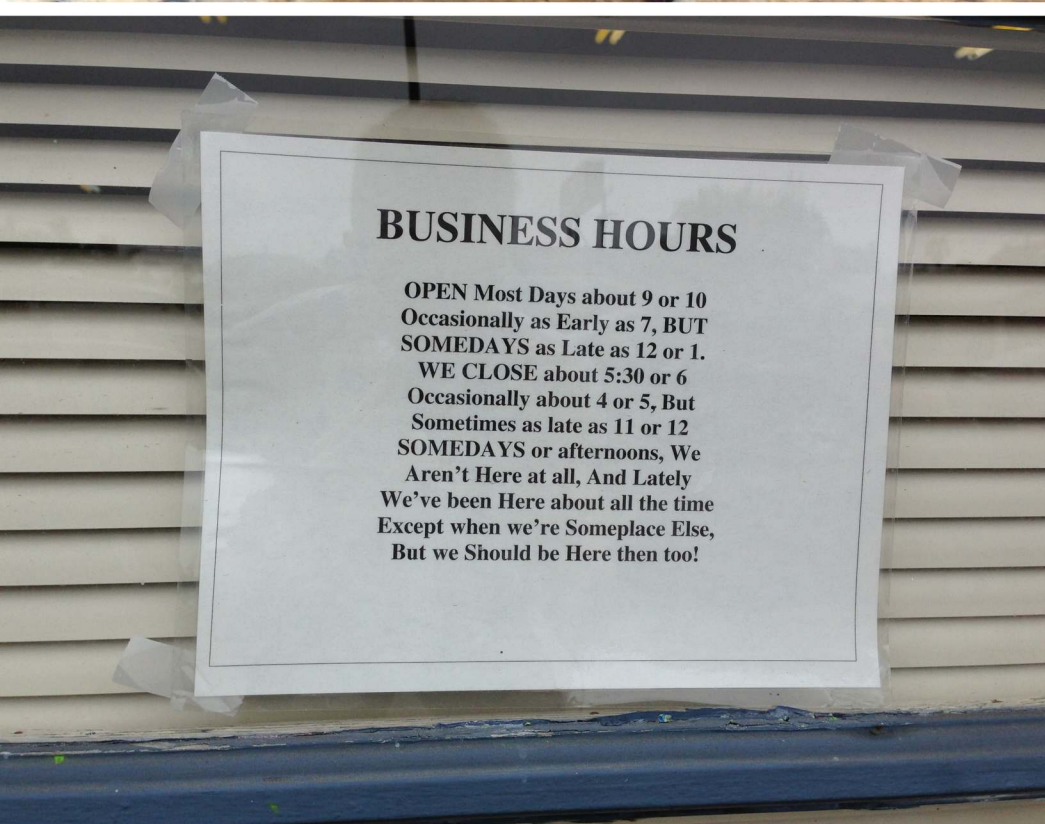




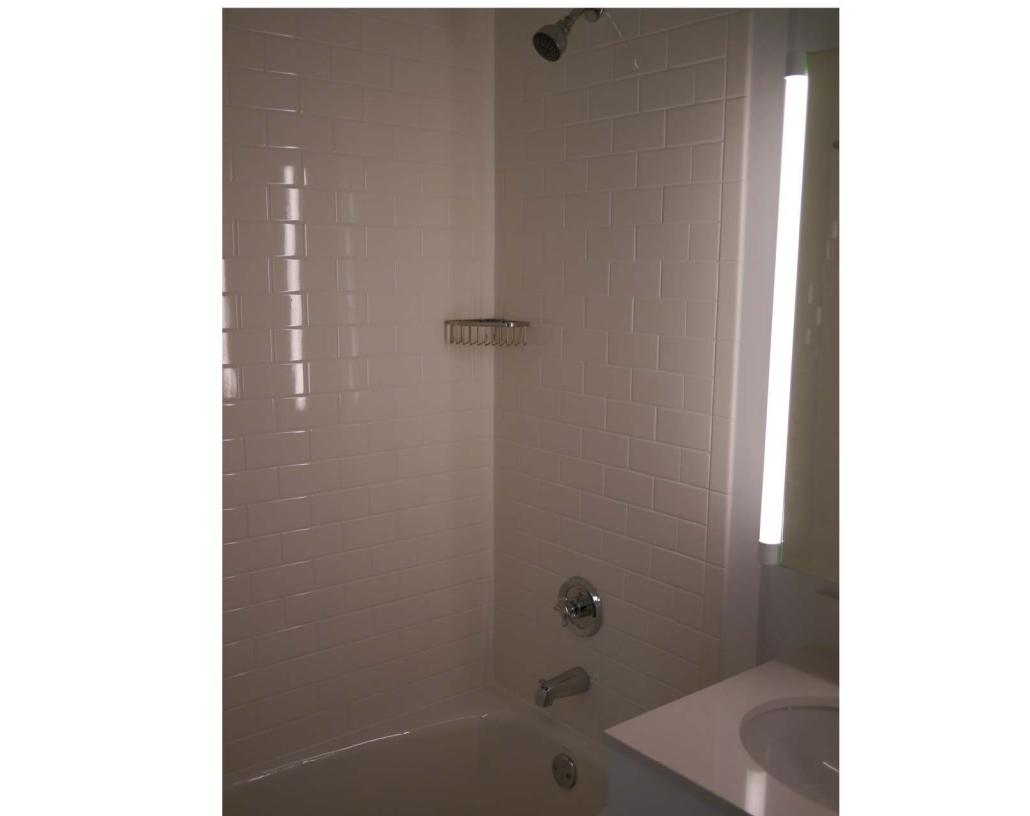
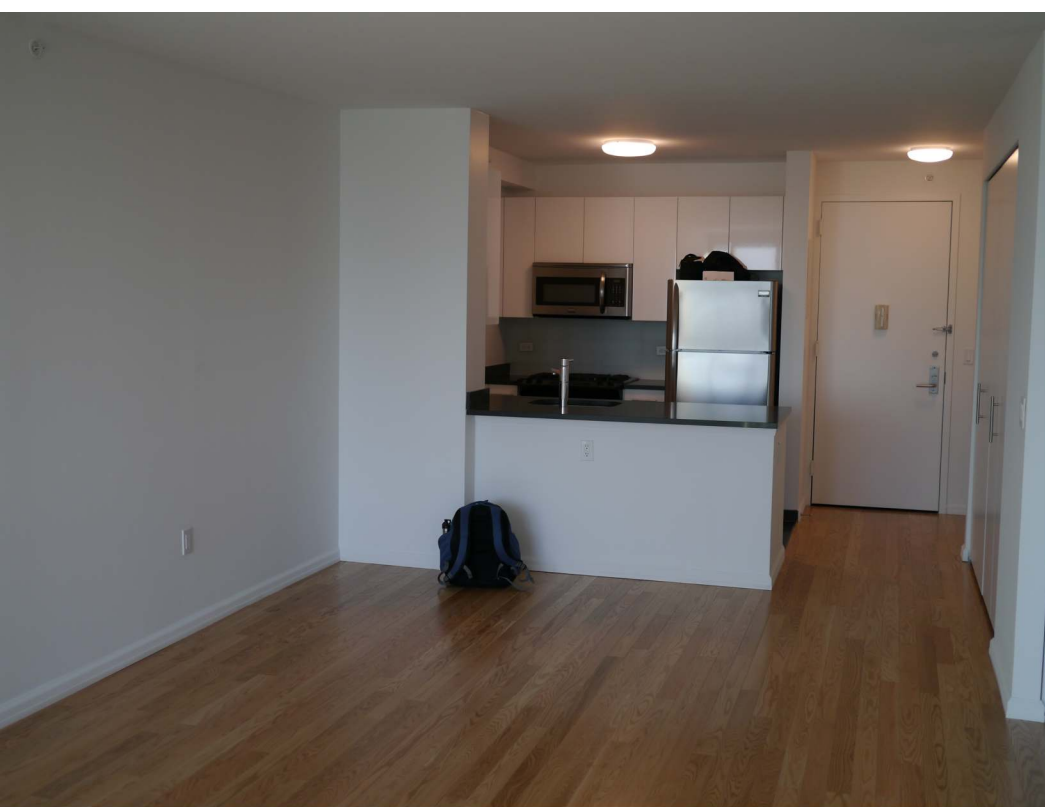




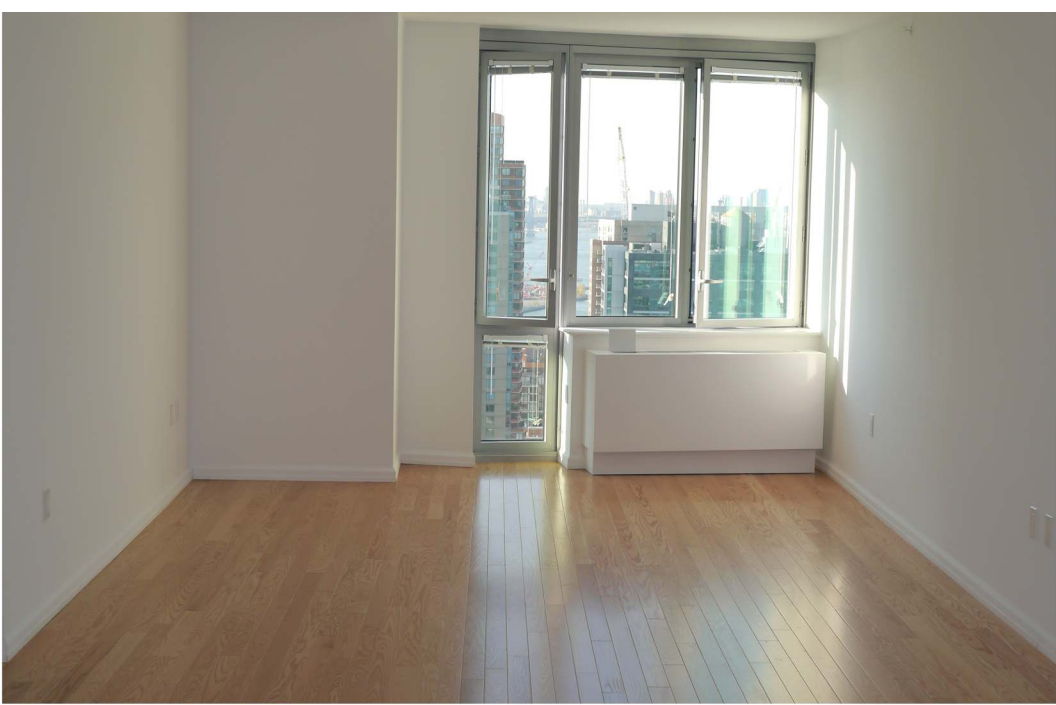




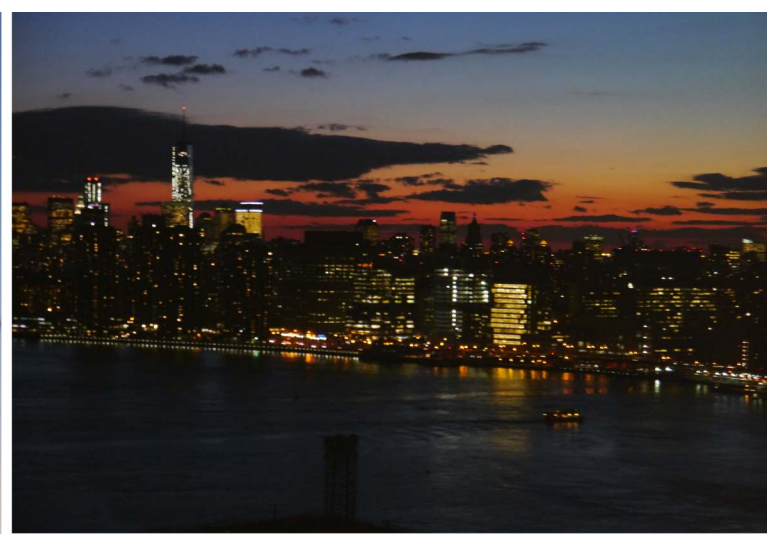




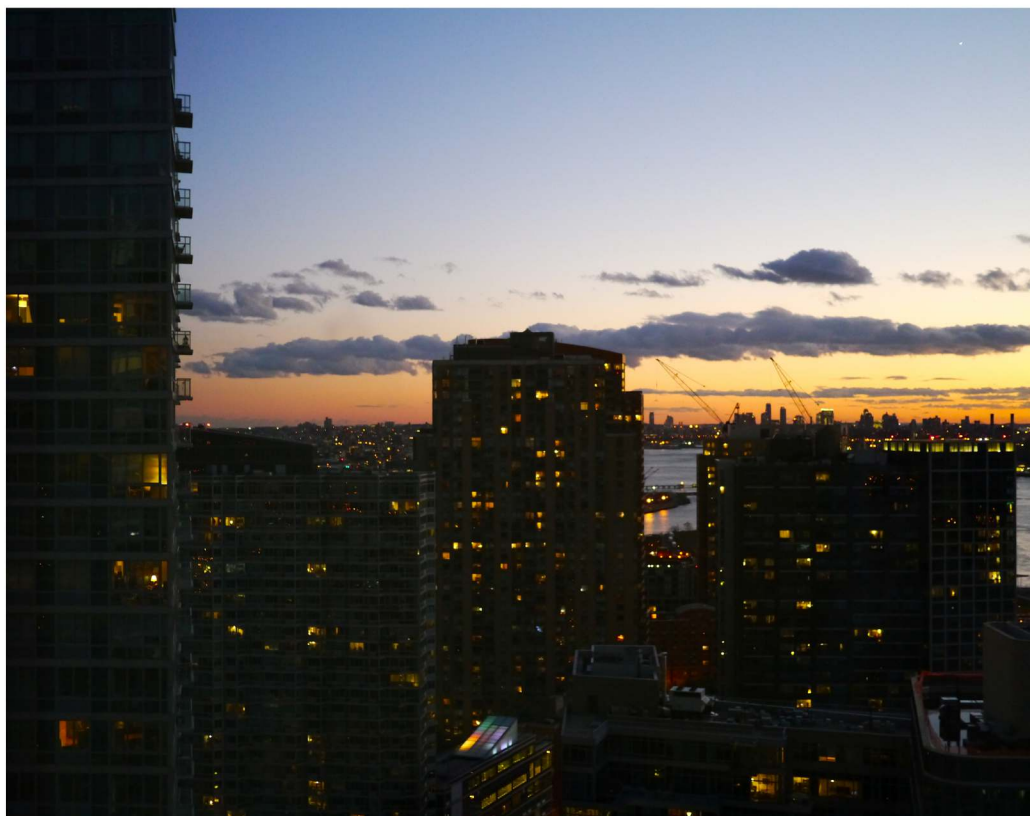
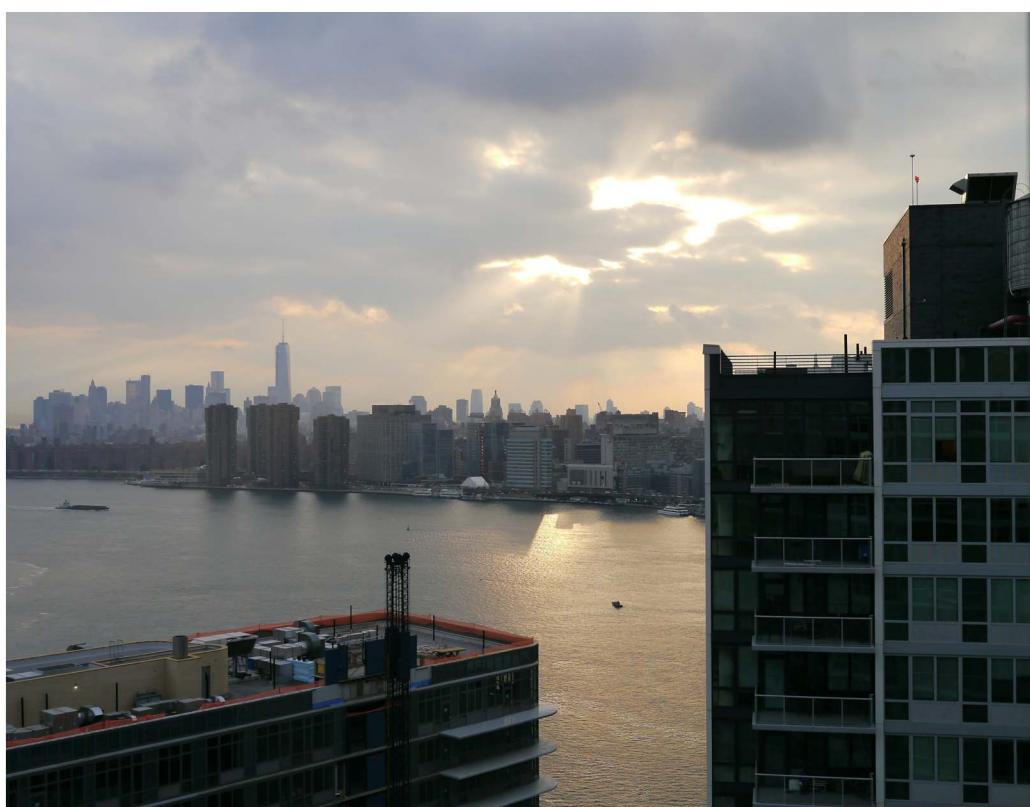
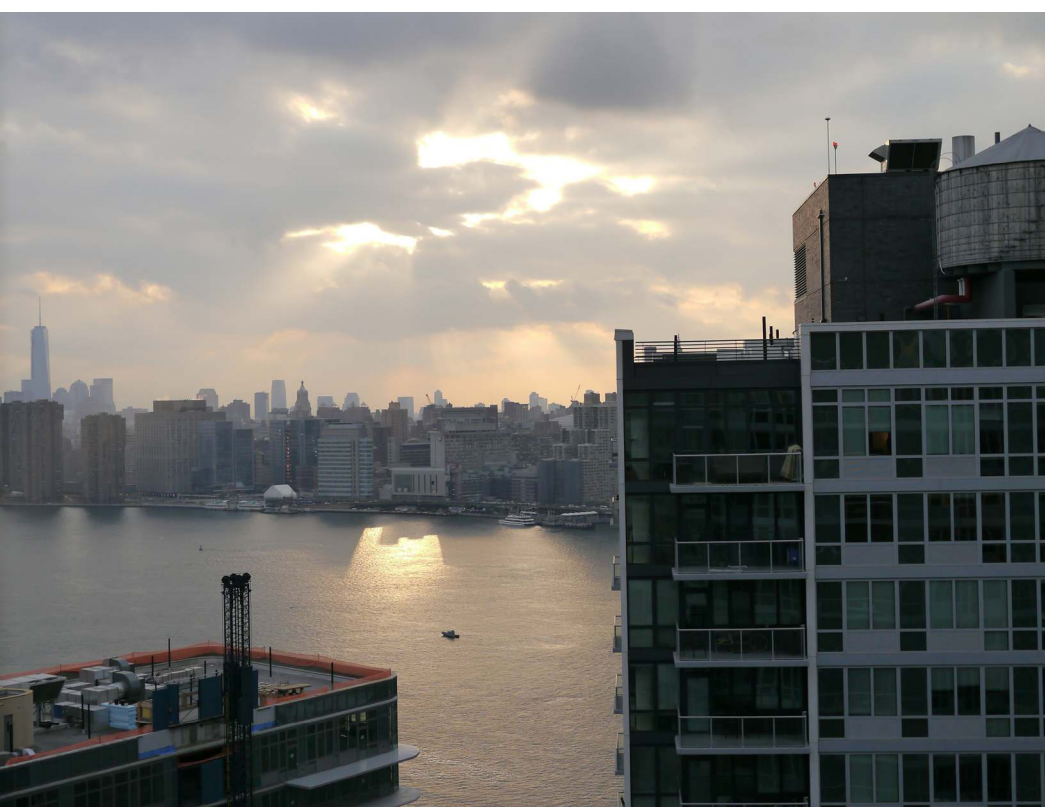


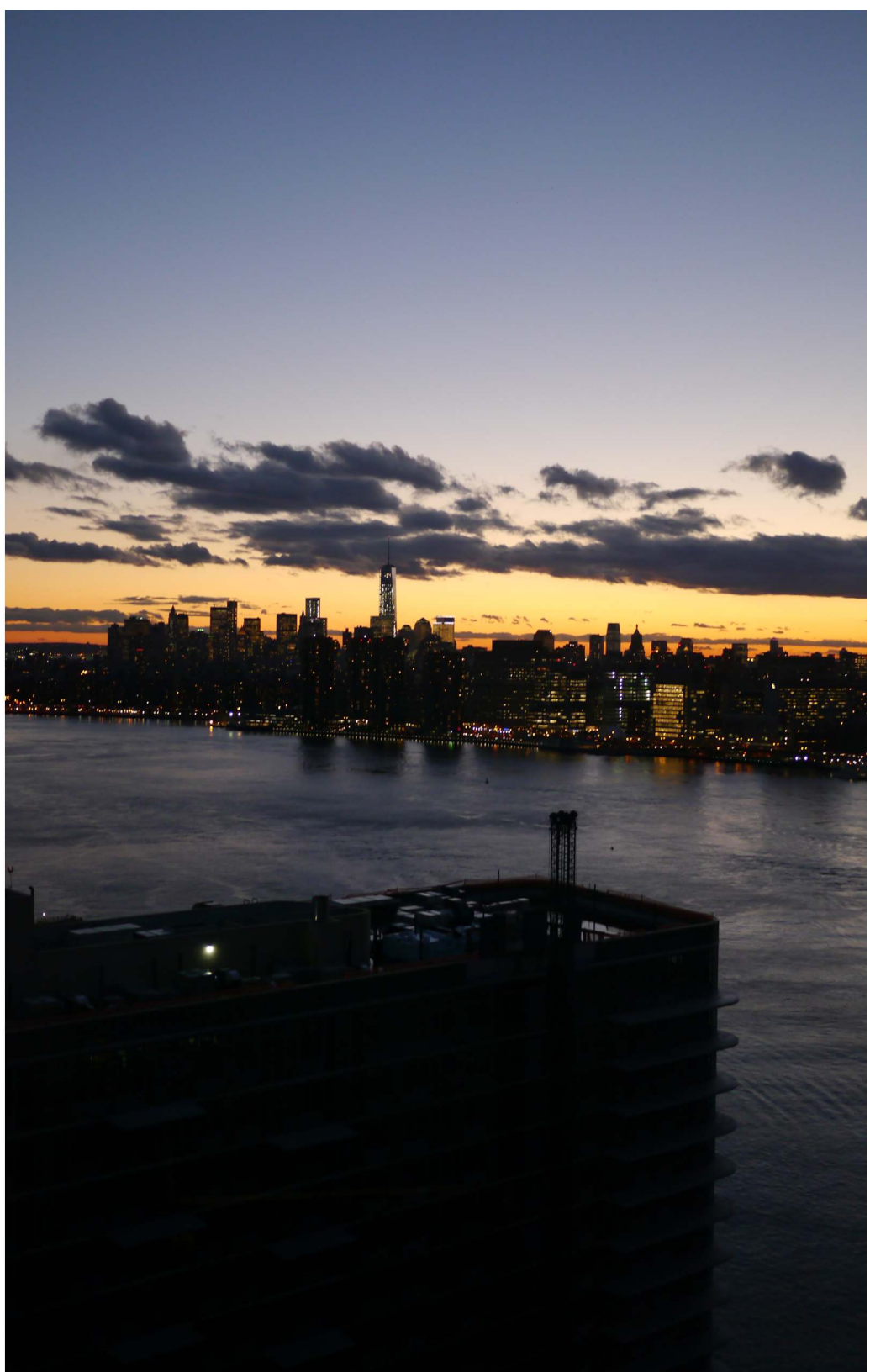


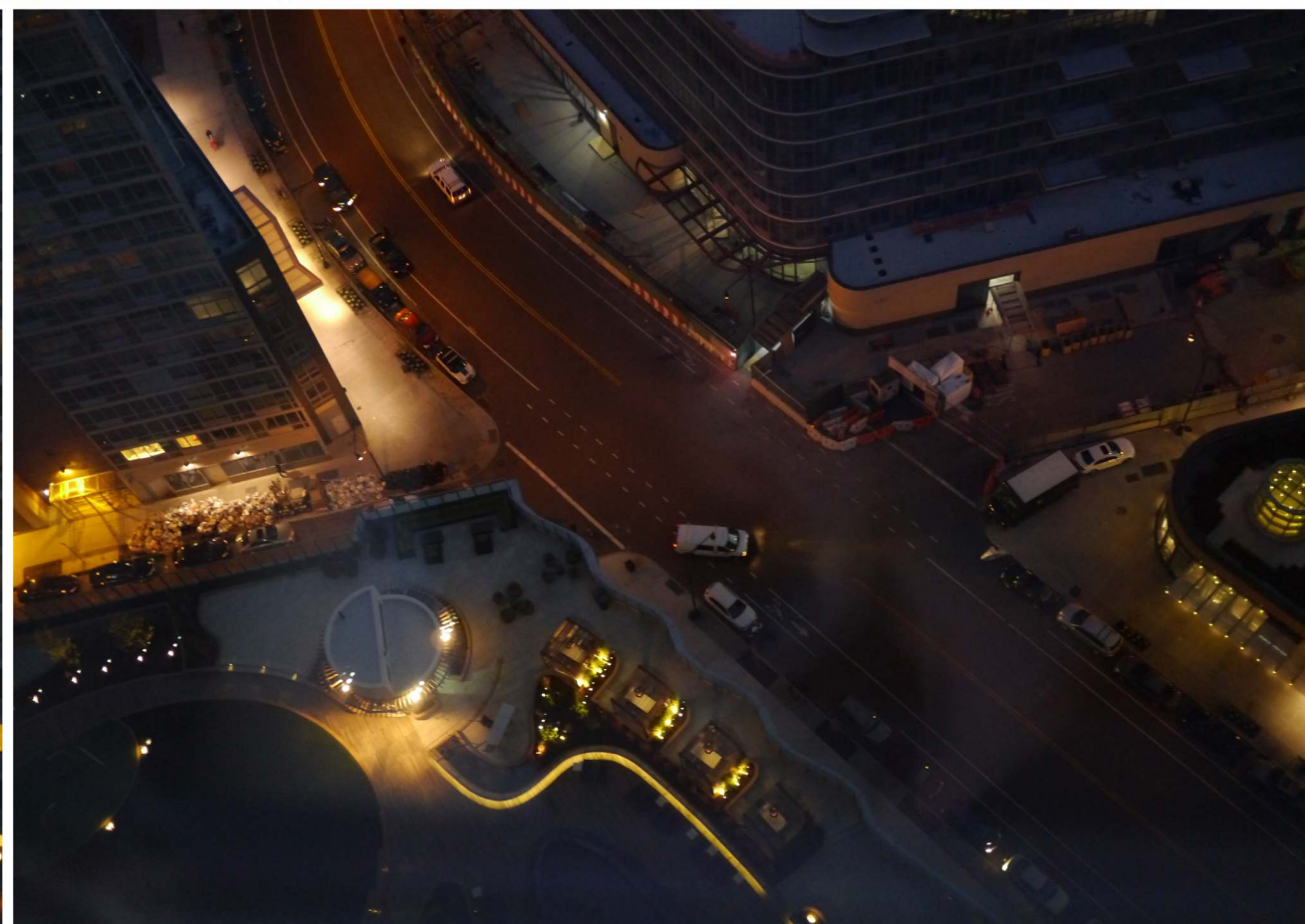
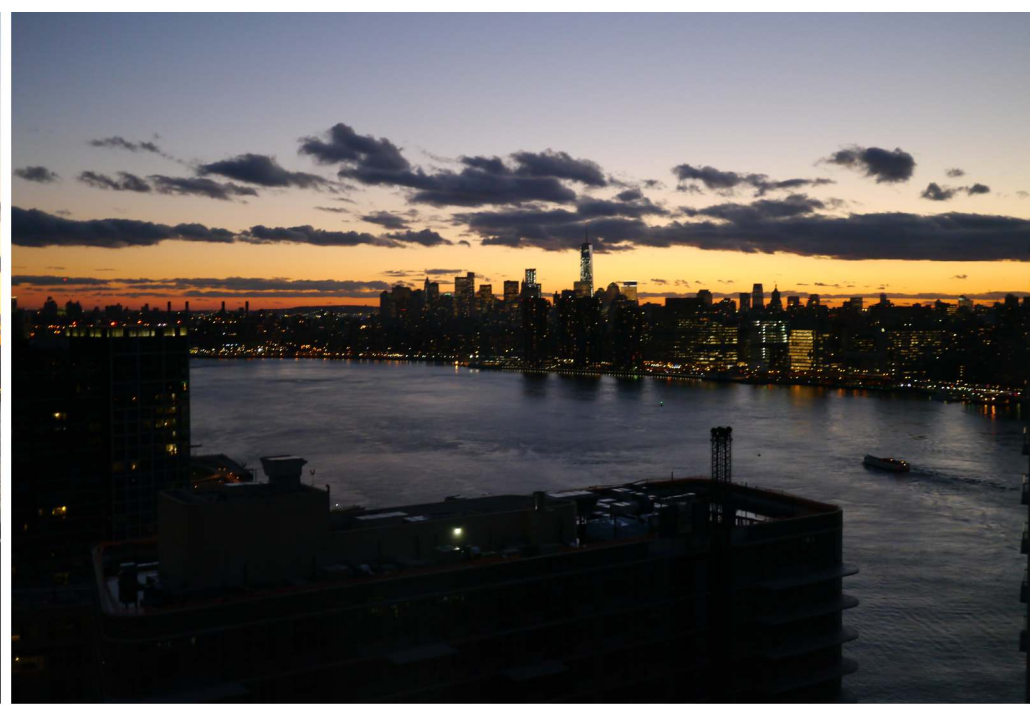
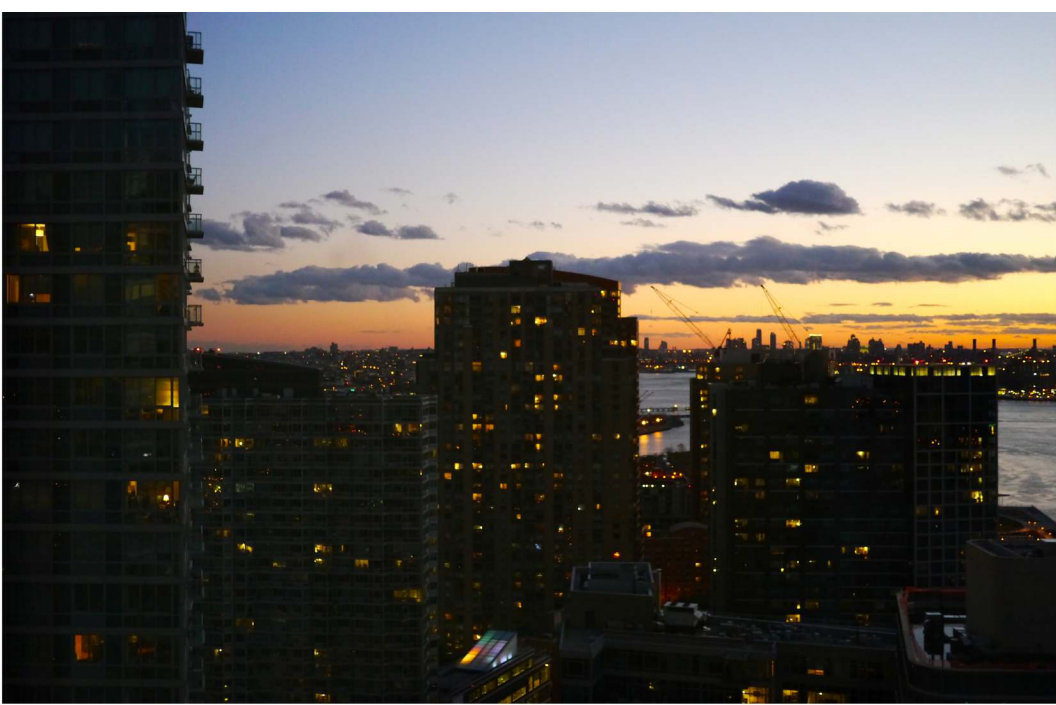


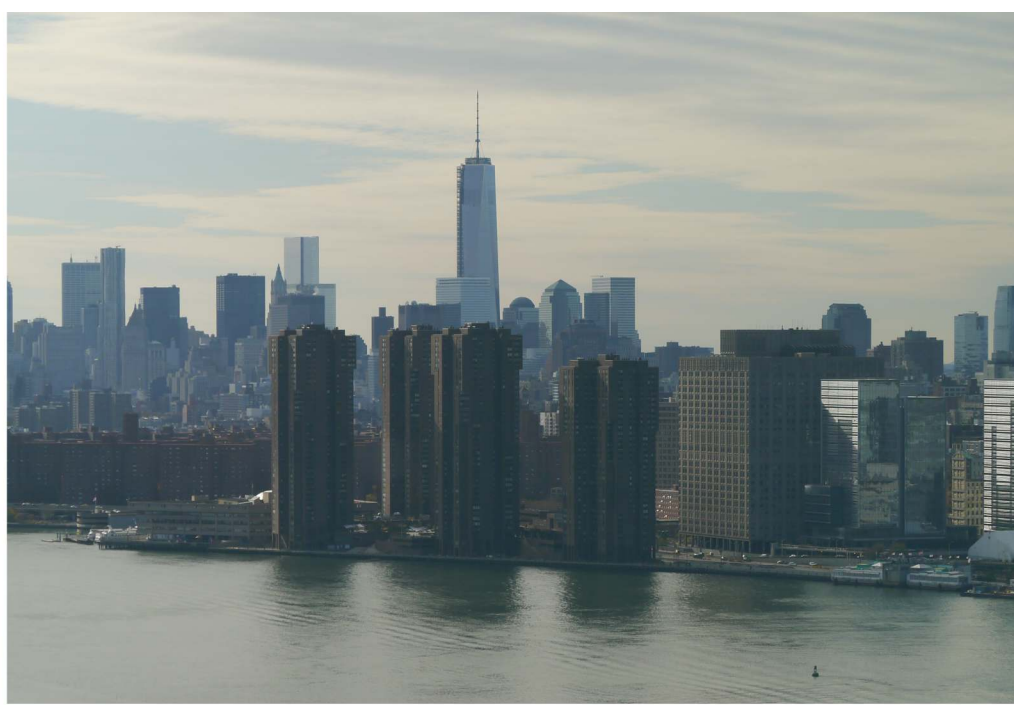
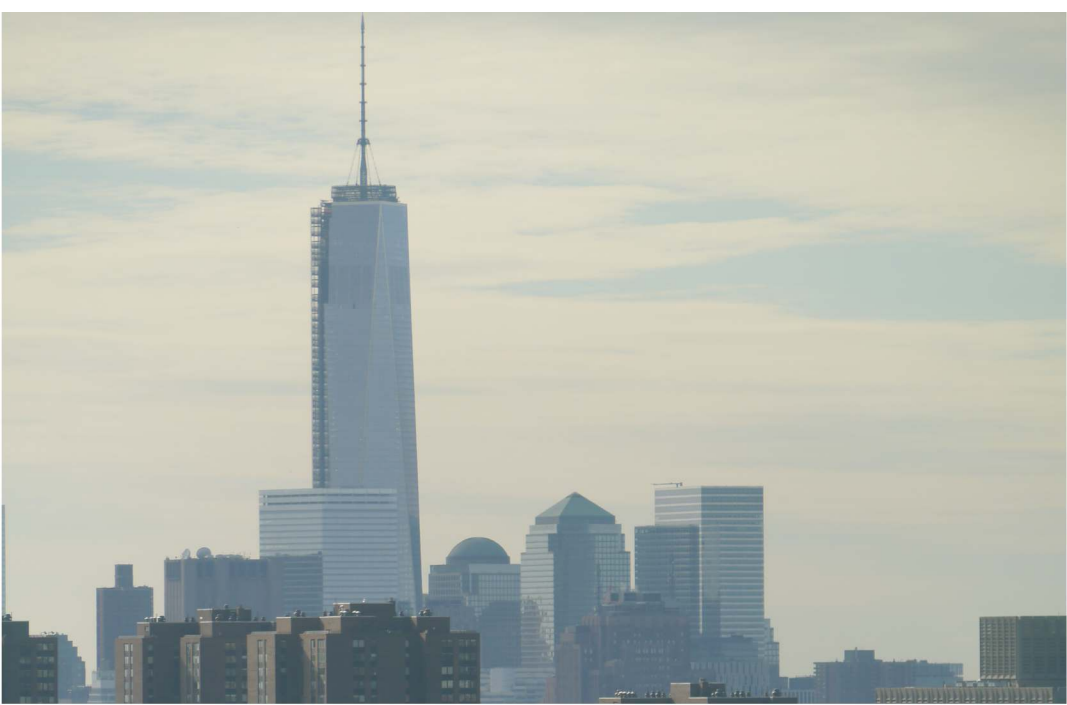


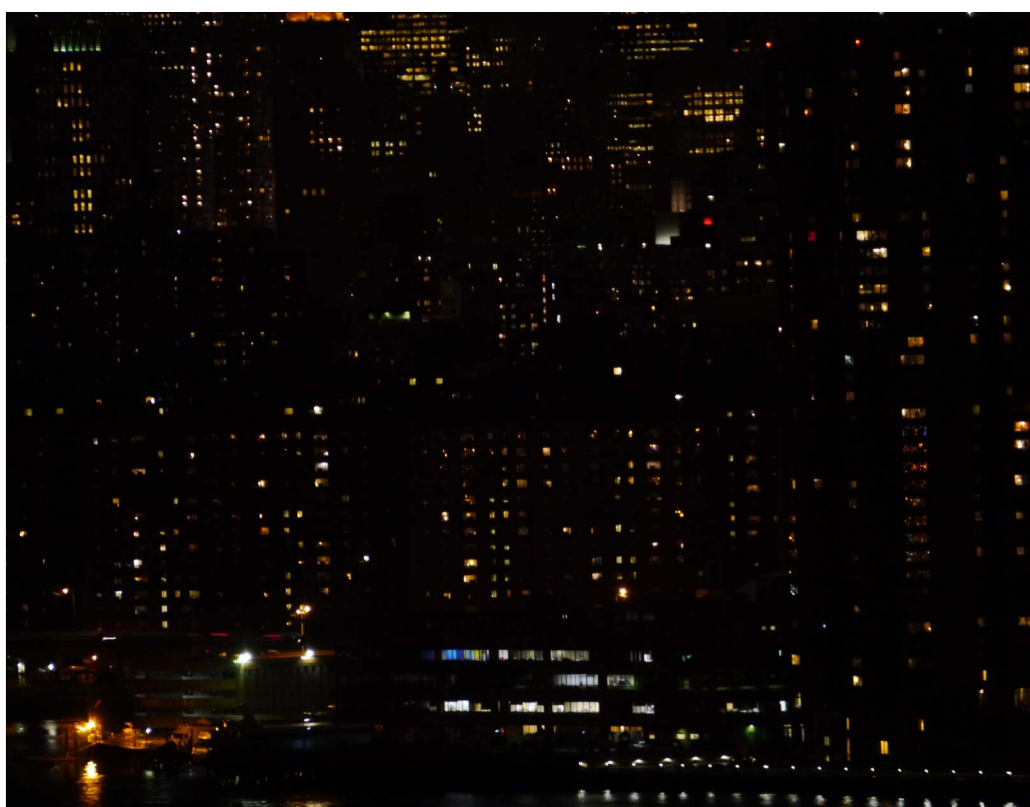
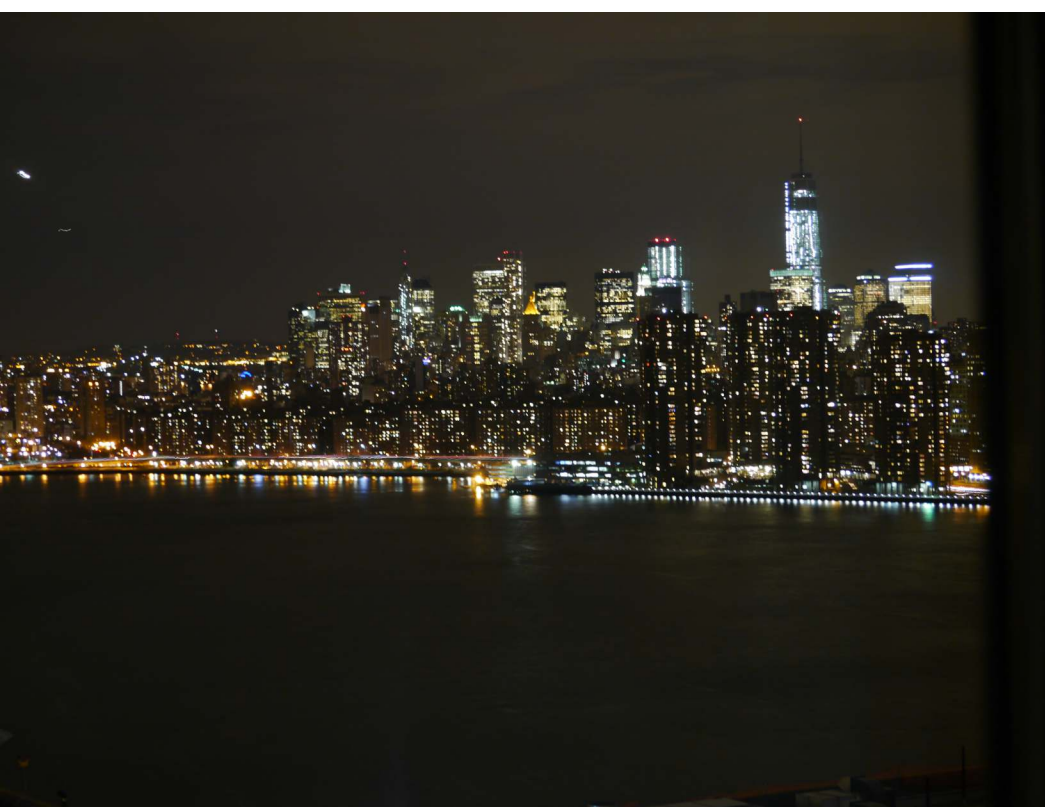


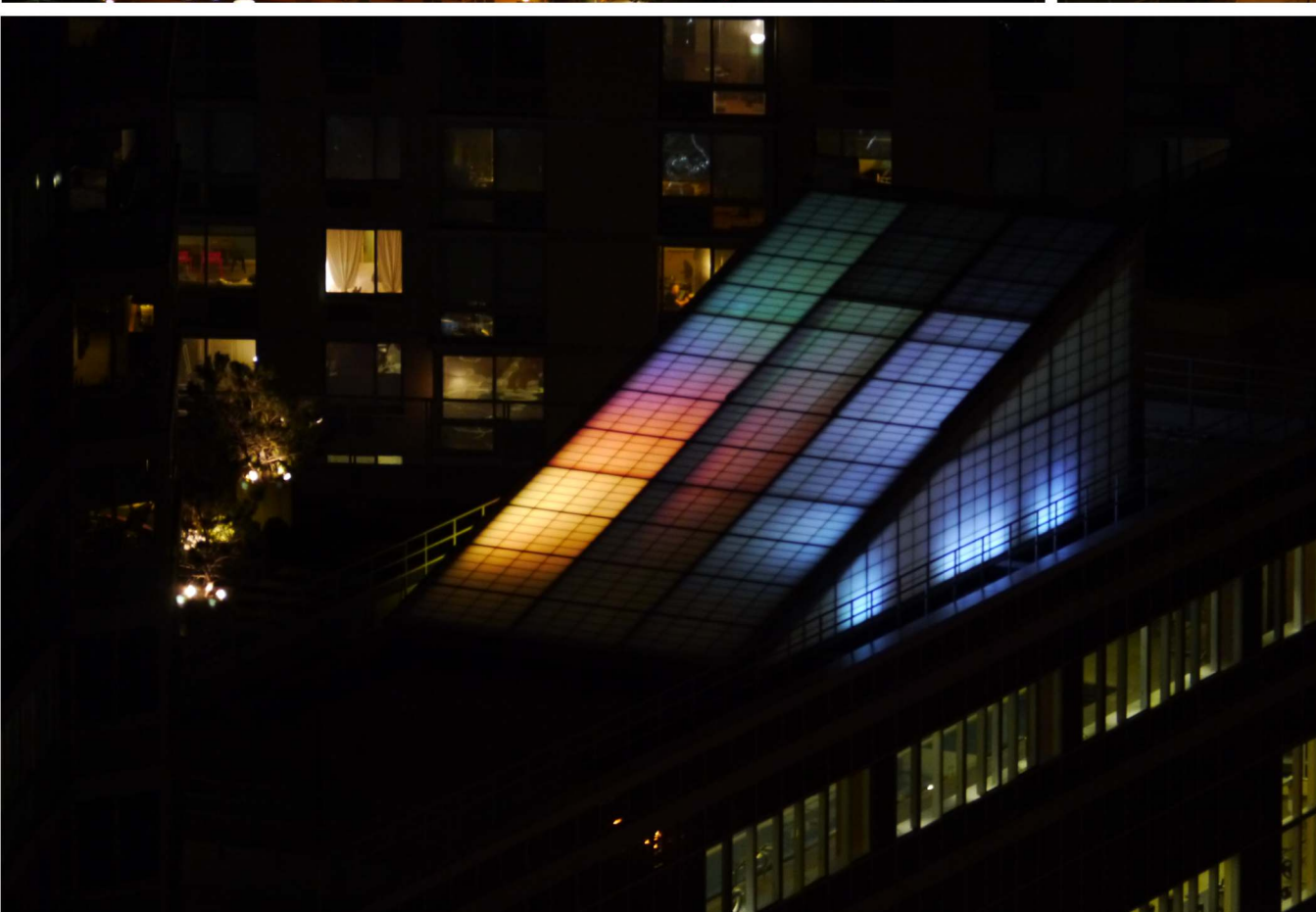
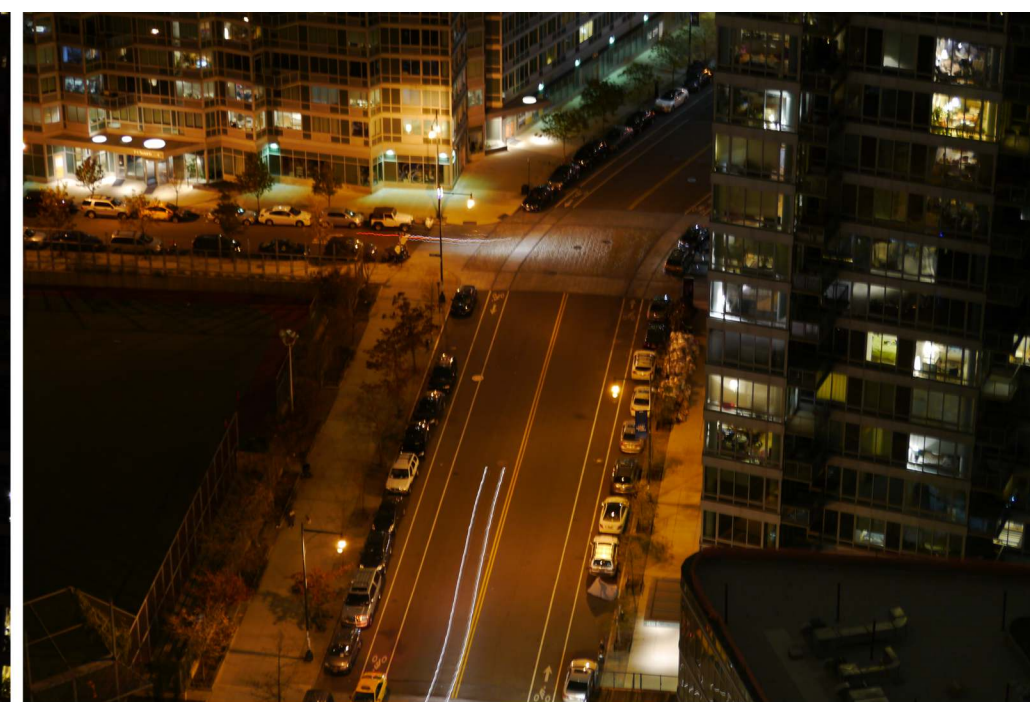
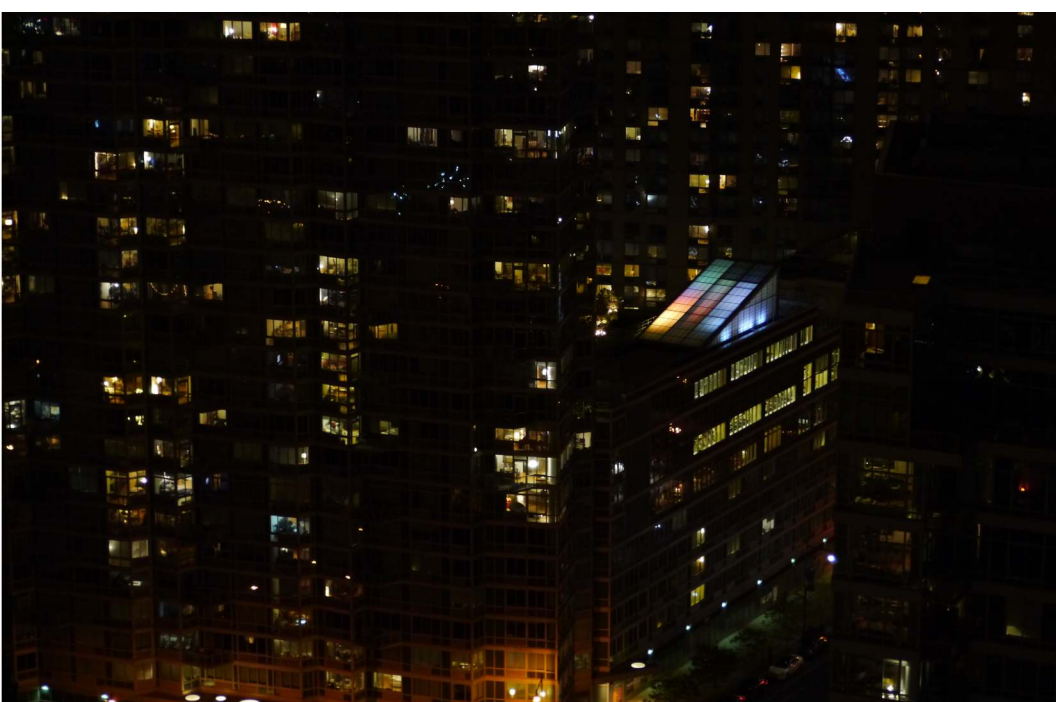


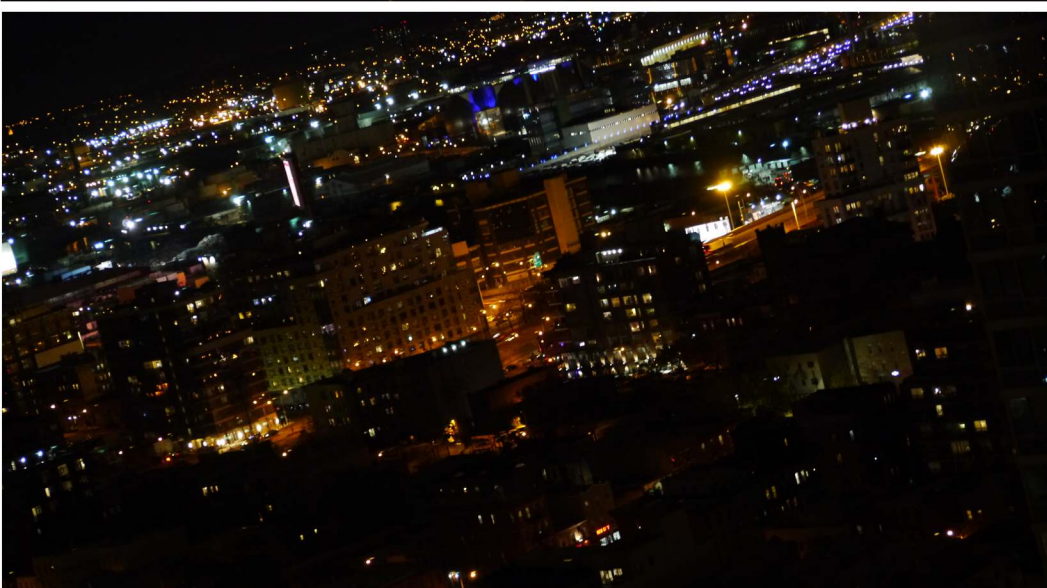
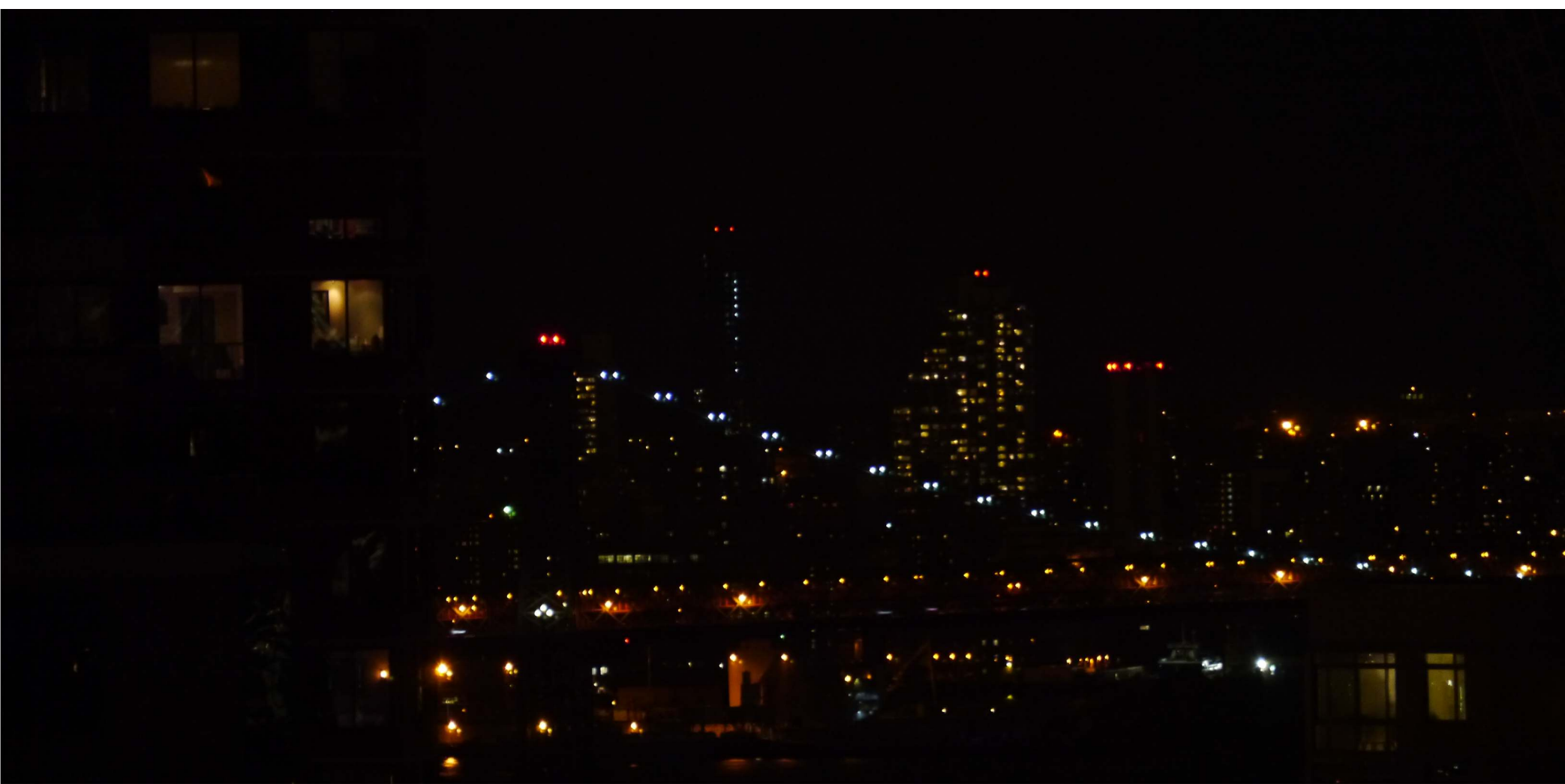


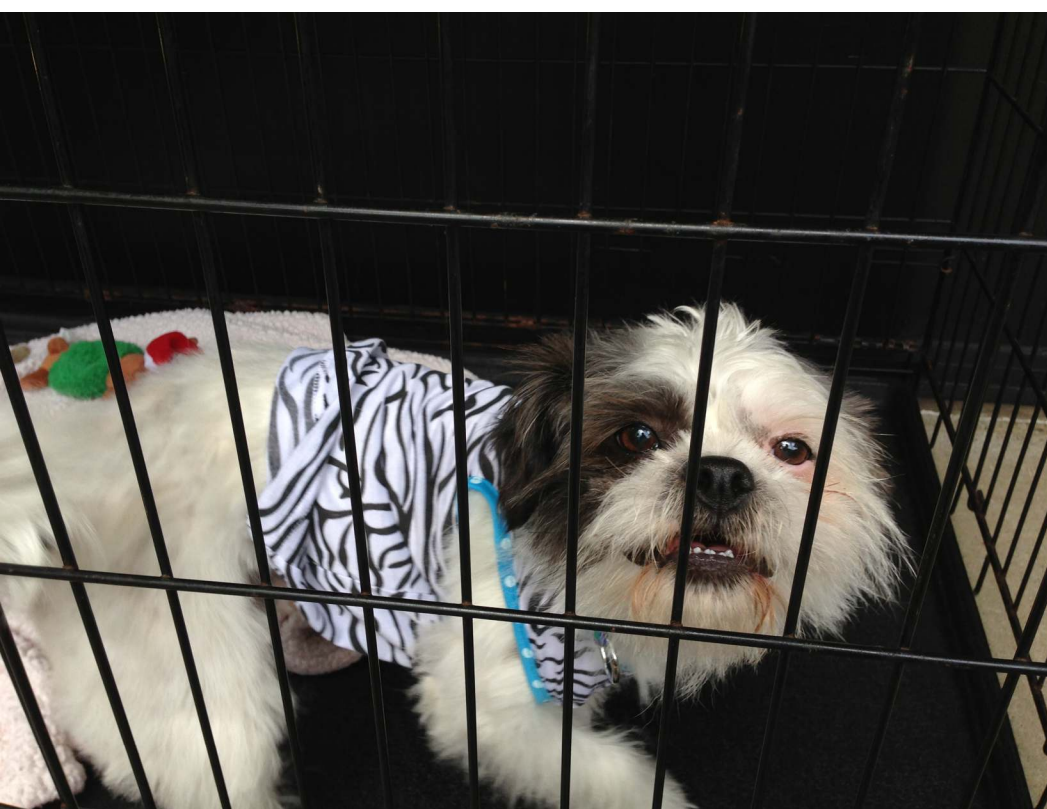








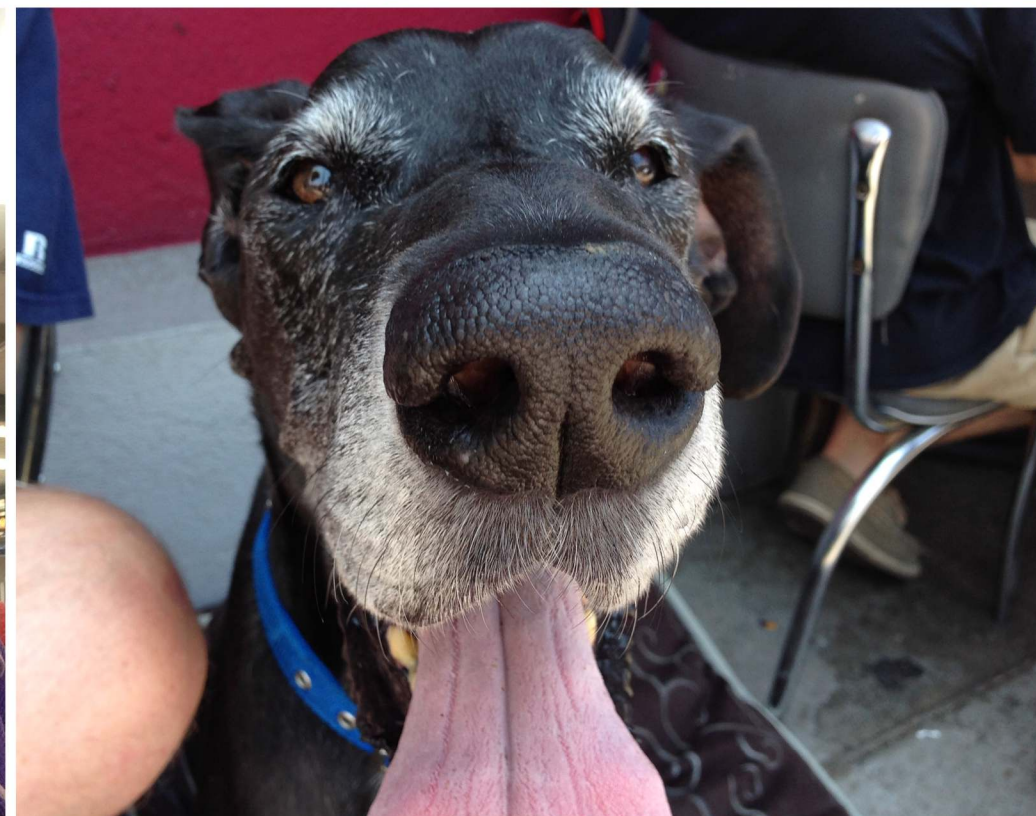
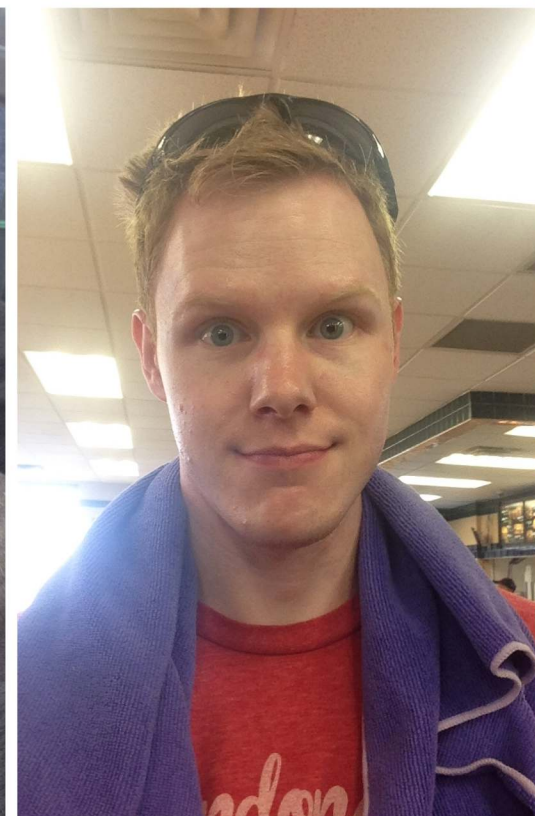
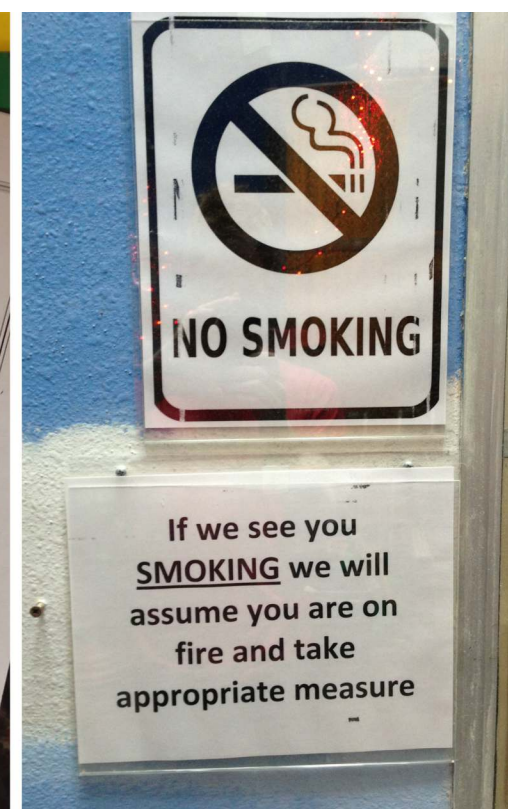


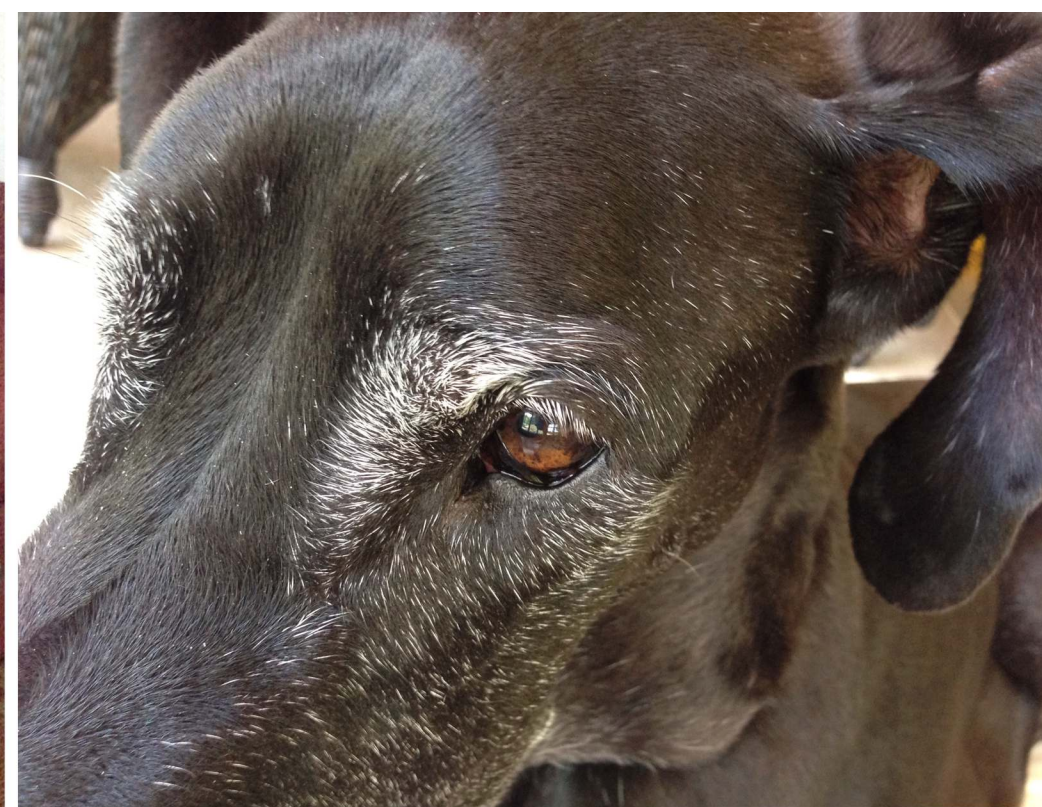


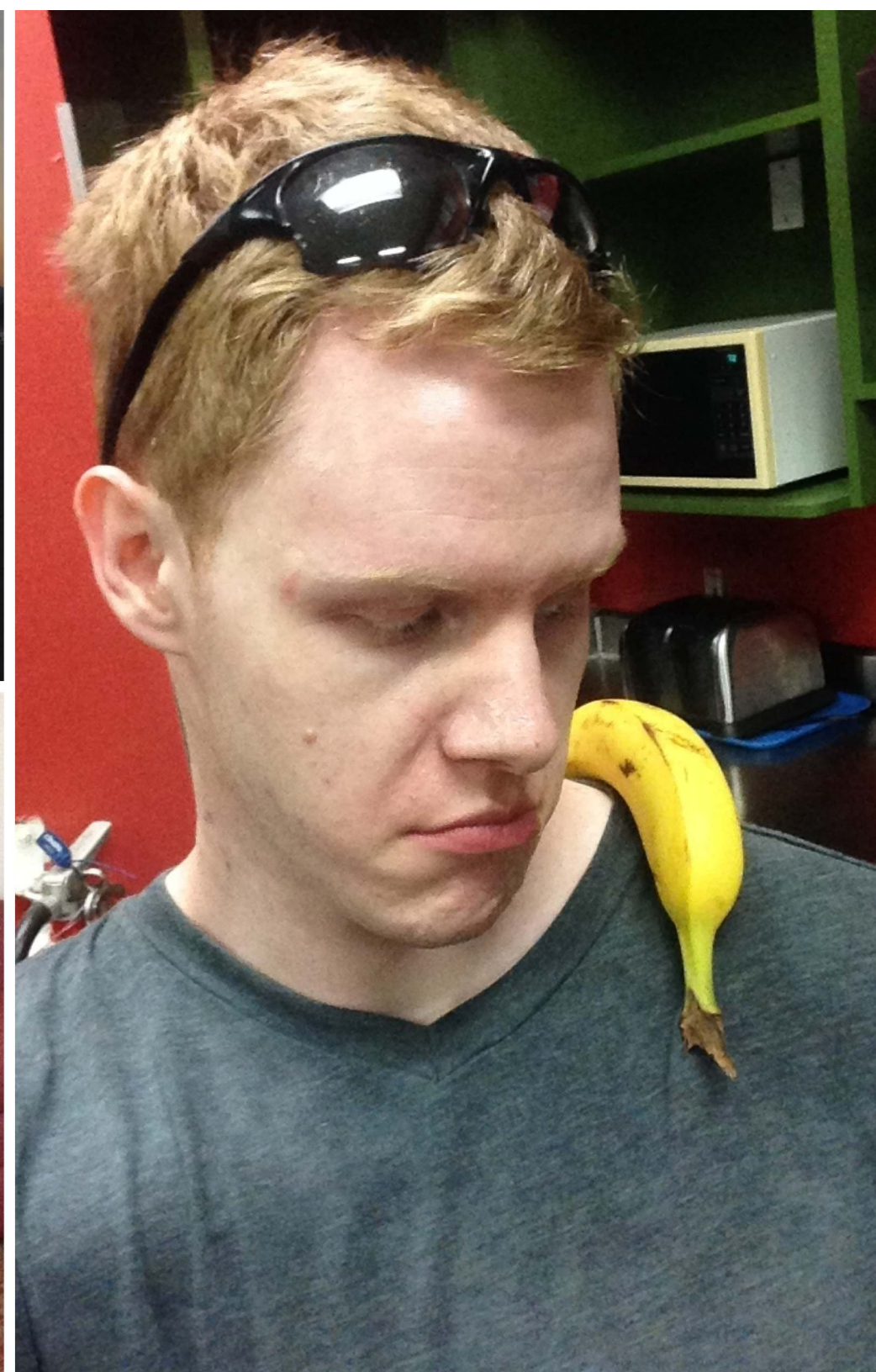
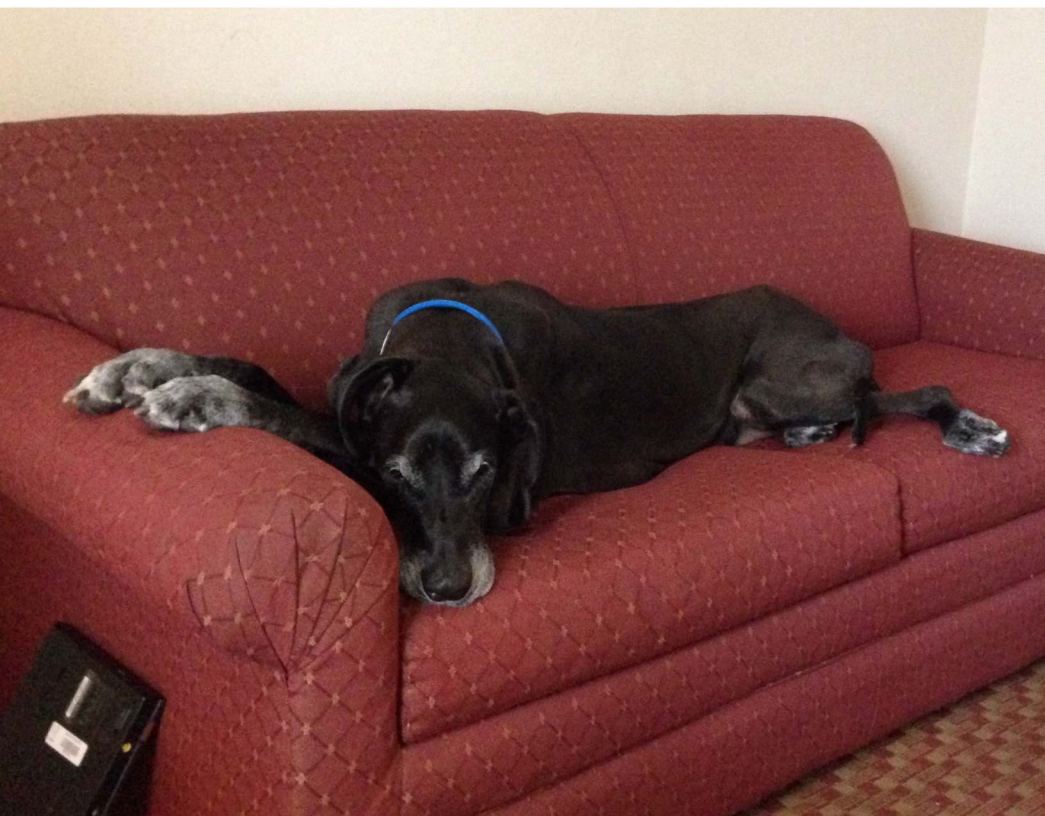
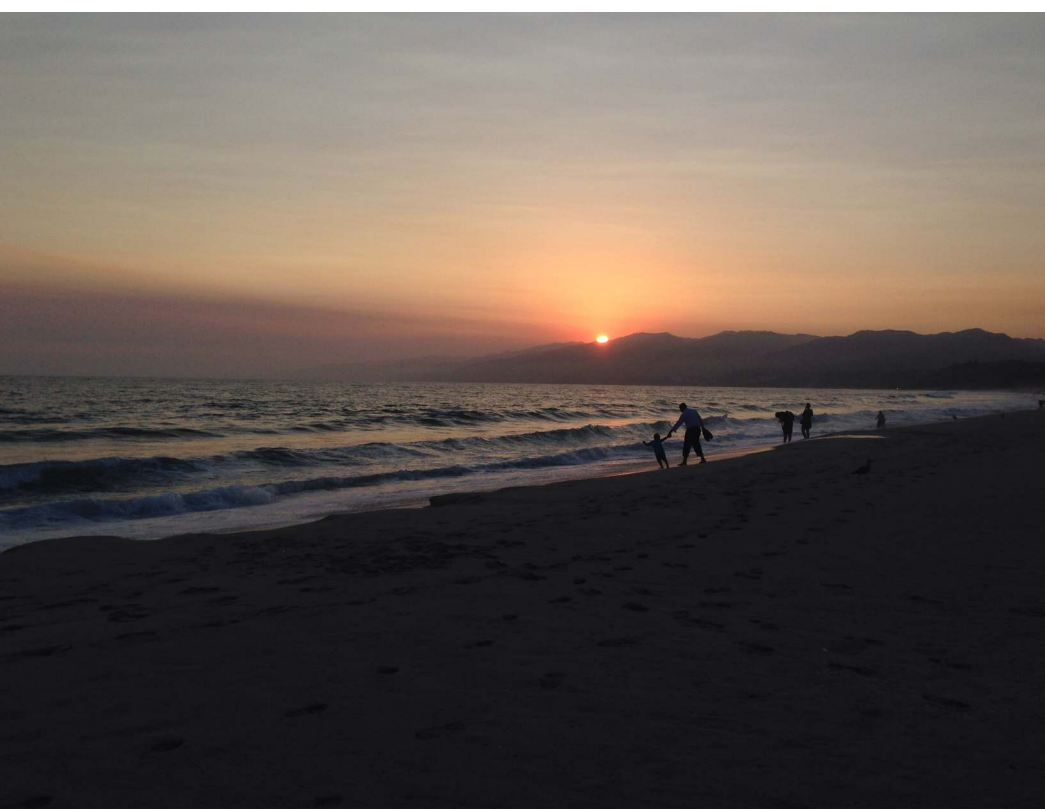
WE CAN ONLY
SELL FIREWORKS
MARKED
"SAFE AND SANE"
AS OF 5/28/13

WE APOLOGIZE
FOR THE
INCONVIENCE

- Management







Flying Trapeze School

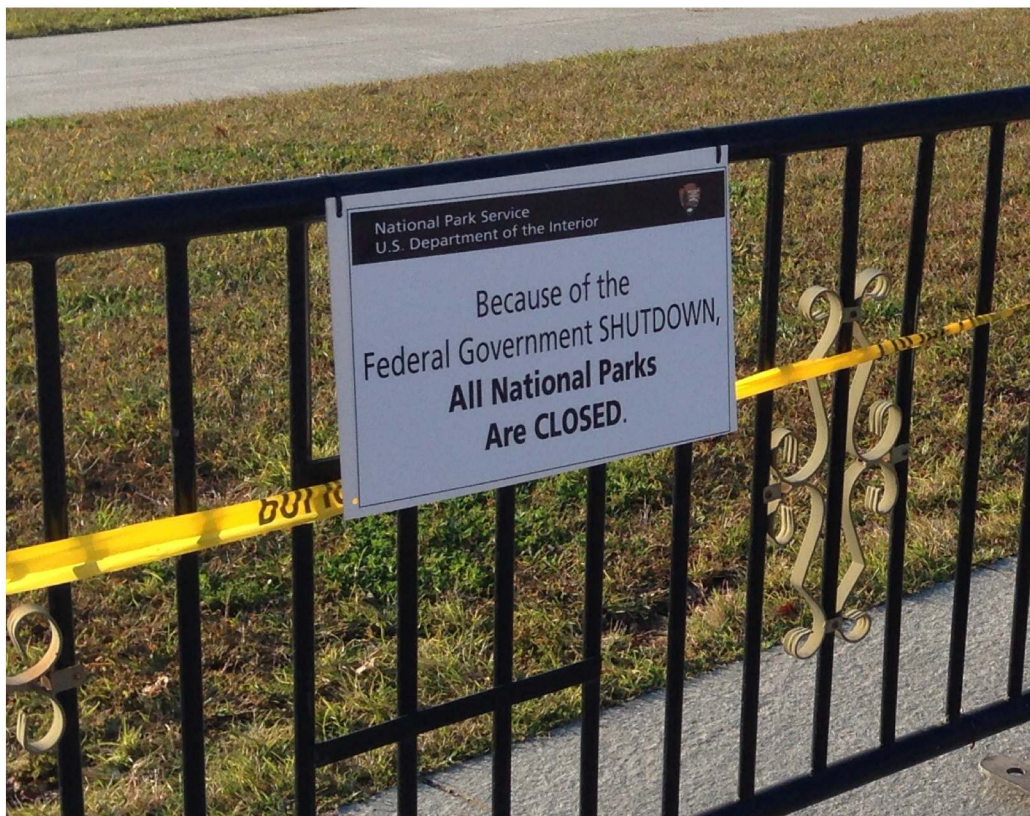
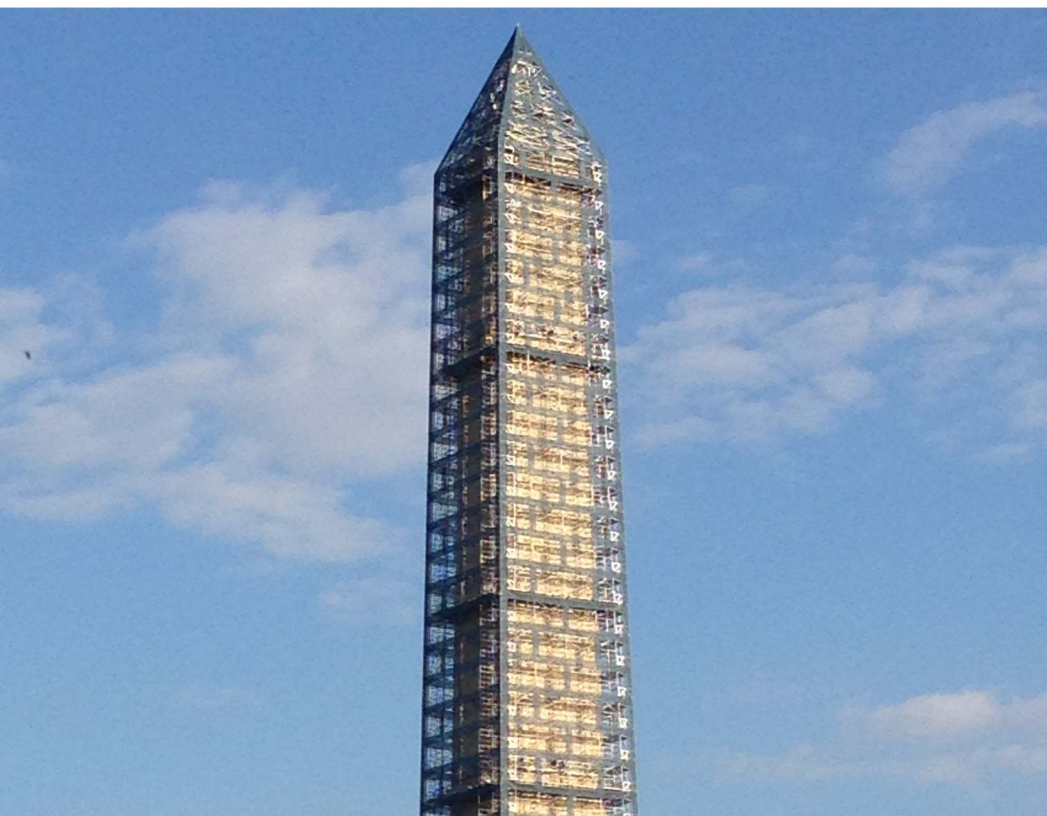


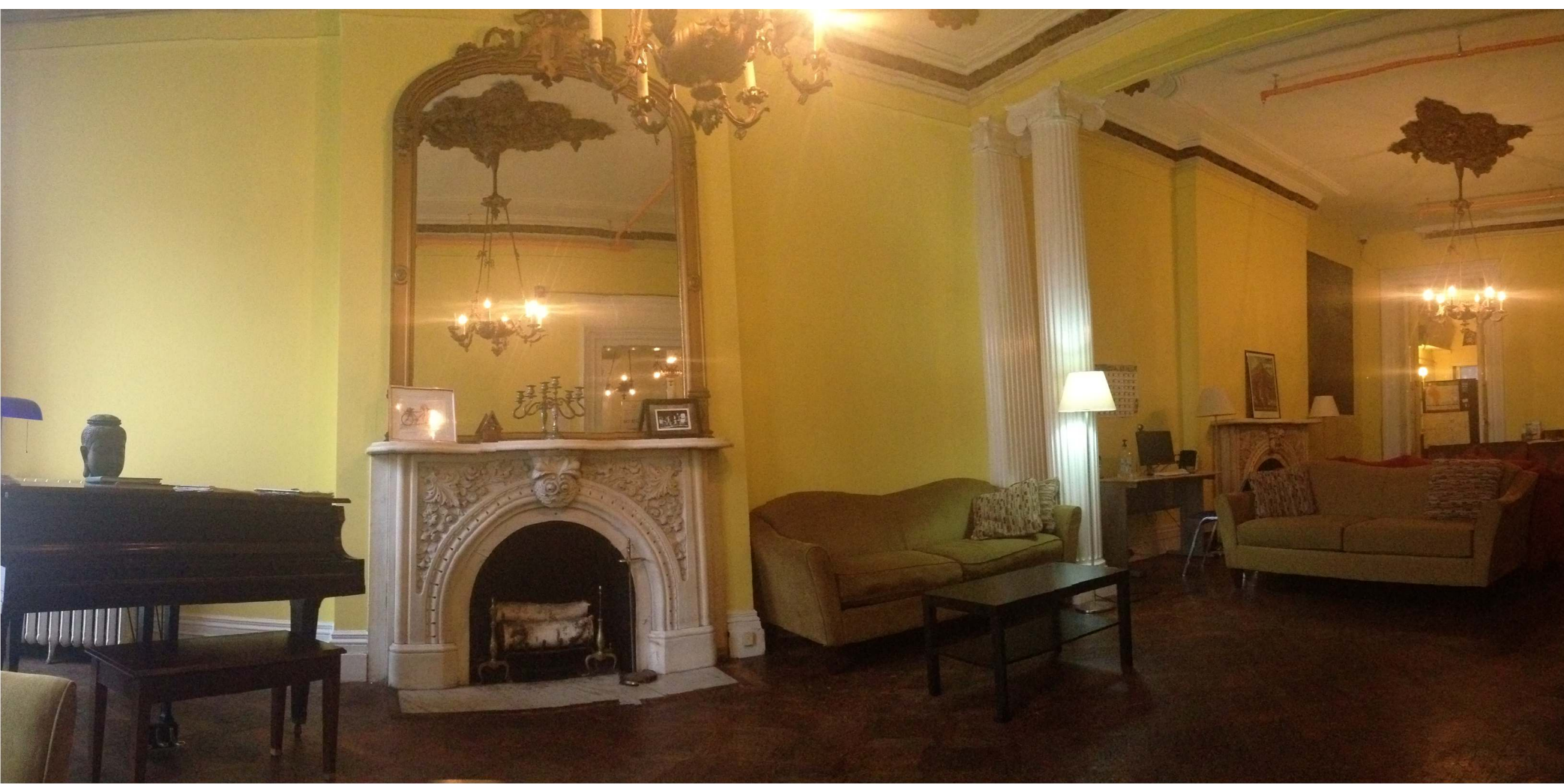
TRAPEZE SCHOOL NEW YORK

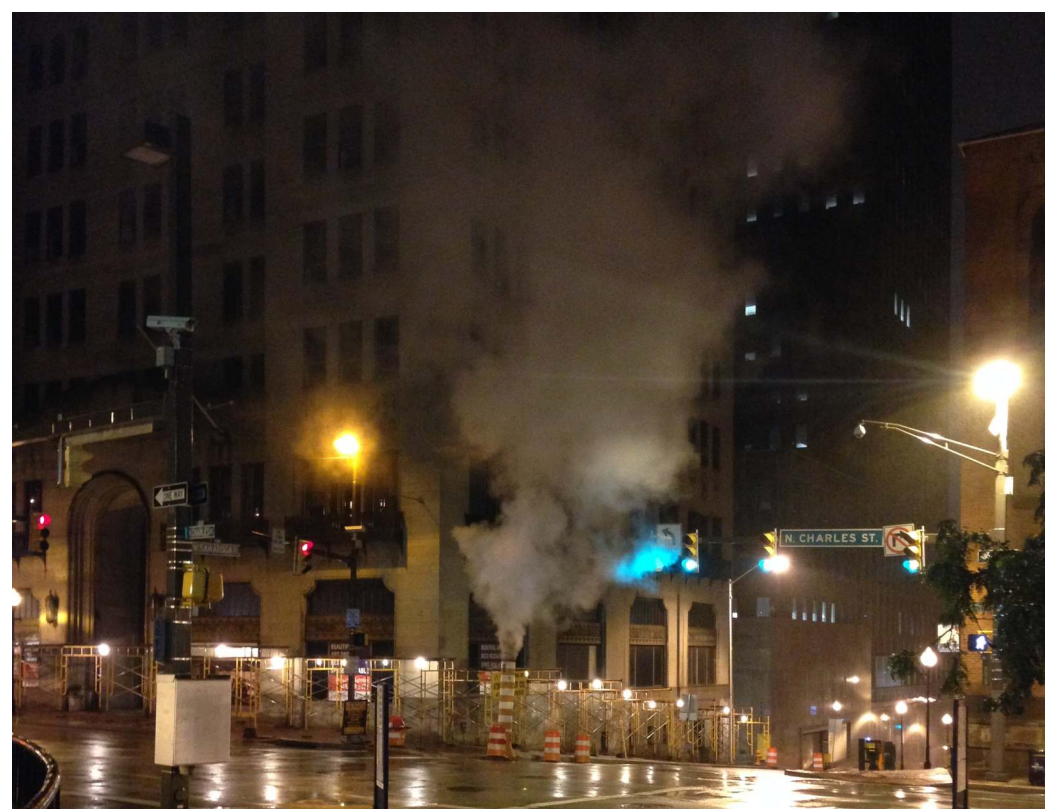


Chicago









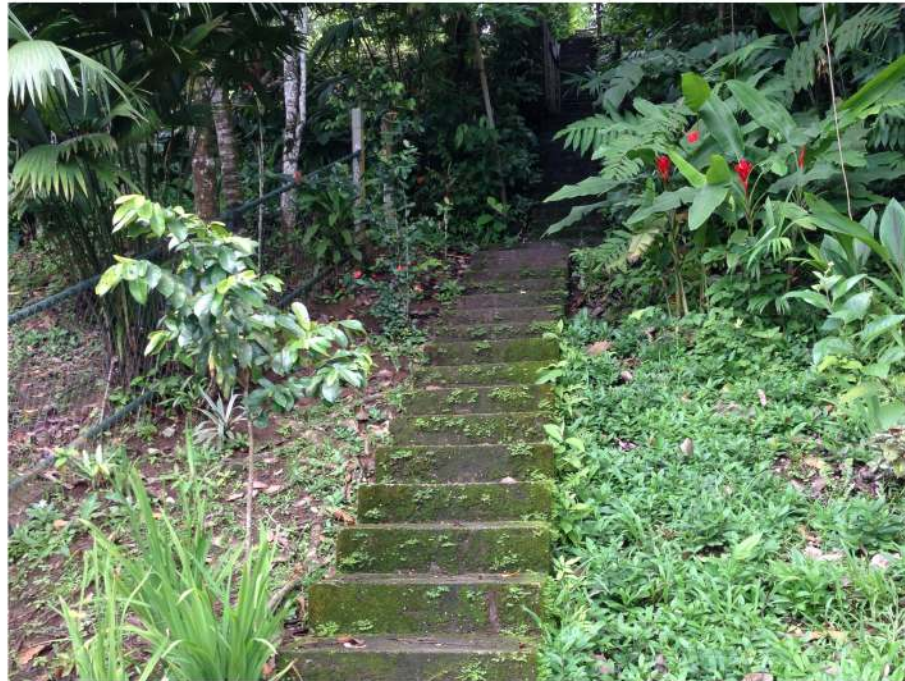
Hostel Customs during Quiet Hours –

Quiet hours in the dorm rooms and 2nd floor are from 11pm to 7am. During quiet hours the dorm rooms are to be used for nothing other than sleeping. If using the bathroom, showering, checking out early, coming in late, etc. we ask that you please take others in the room into consideration. Use of cell phones, laptops, music devices, etc. are not allowed in the dorm rooms during quiet hours.

1. Use the hallway bathrooms and showers.
2. Take advantage of the lockers in the hallway to store the items you may need so you do not have to wake anyone going through your bags.
3. Only turn on the overhead light when absolutely necessary.
4. If you know you will be waking up early or coming in late and it will still be dark, ask to borrow a flashlight from the front desk.
5. If using an alarm clock, try to put it on vibrate or keep it close to you so you can turn it off quickly.
6. Keep the door closed and locked at all times.

By following the above guidelines you will help to make everyone's stay here an enjoyable one. Continued violation of the quiet hours' policies may result in your removal from the hostel.

Thanks - Hostel Staff



New York to Costa Rica to New York

(Plus Extras)



Made on a Mac